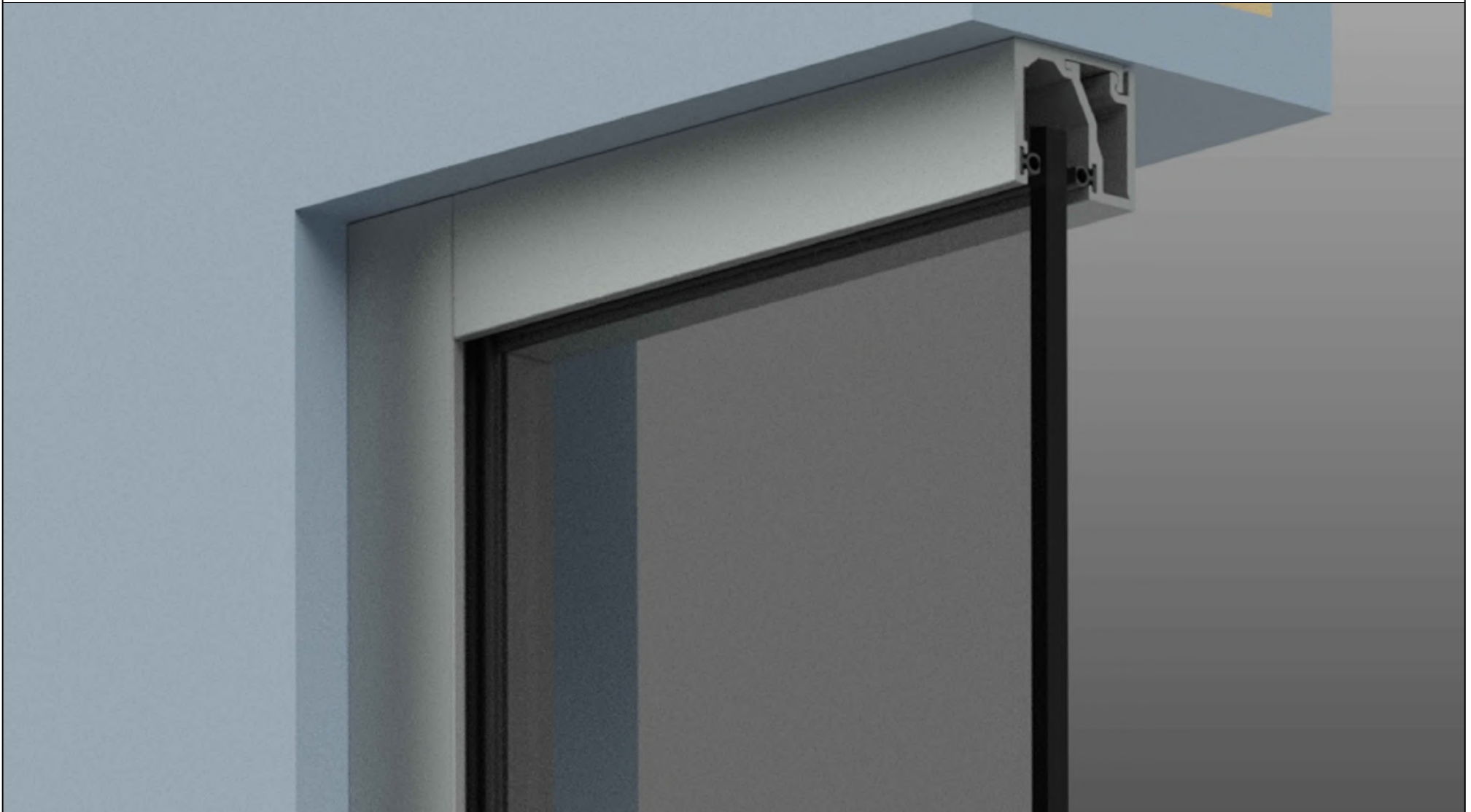
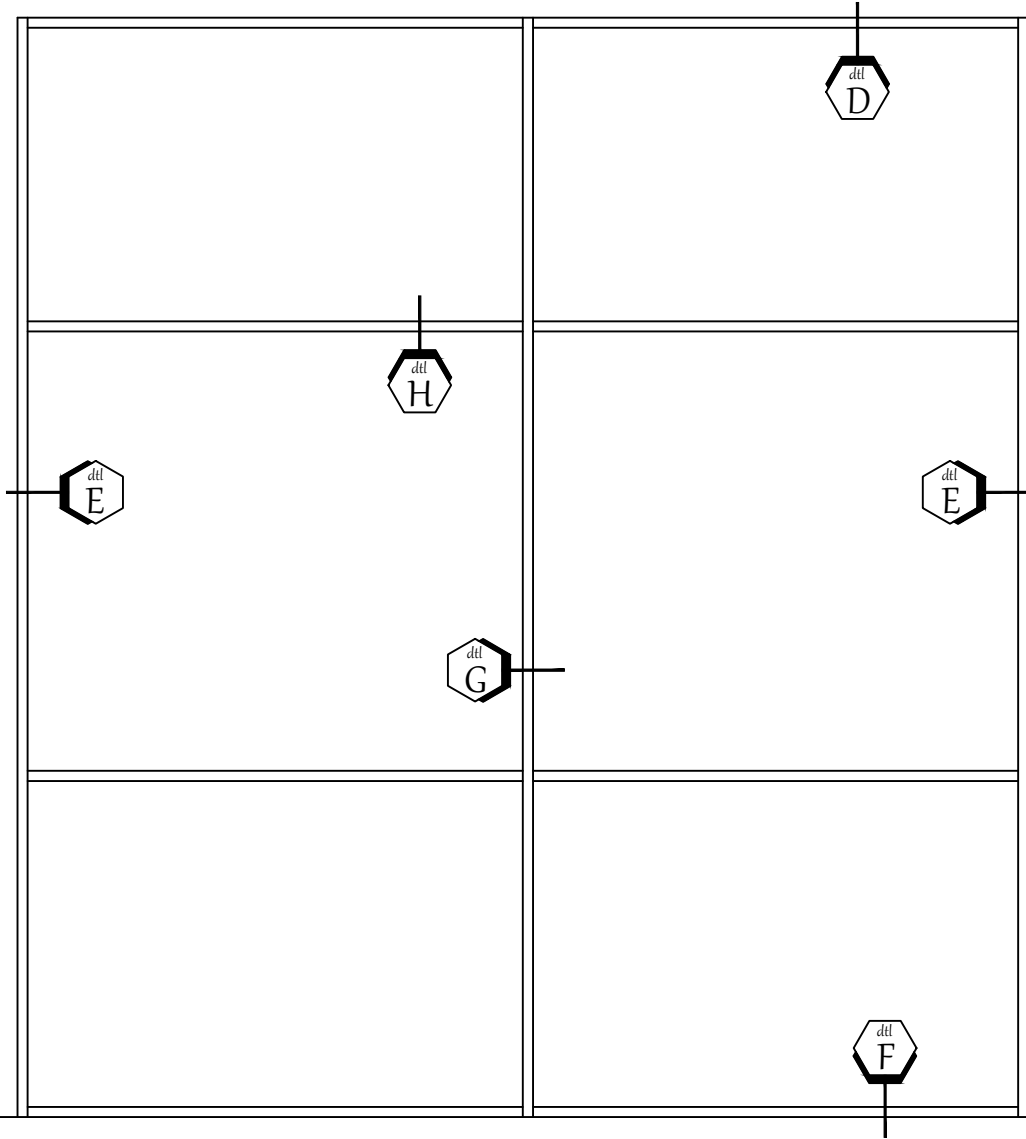


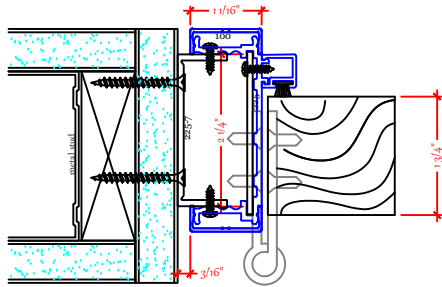
Installation Instructions for Wilson Partitions 225 Demountable Wall System

Borrowed Light Window Frame Installation



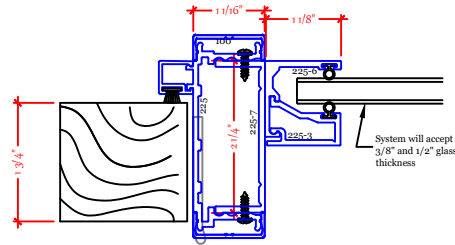


Basic Product Details

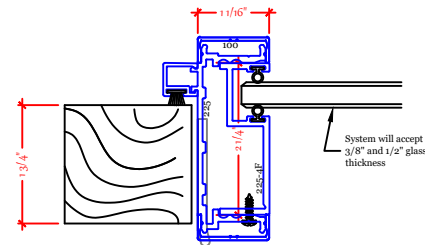


NOTE:
4-1/2" x 4-1/2" x 1/4 ga square hinges REQUIRED (by others)

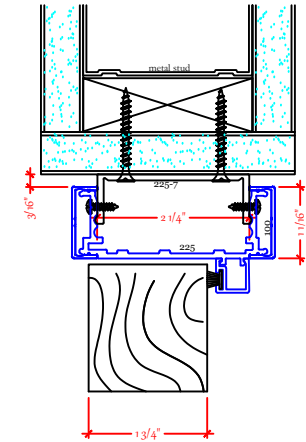
A Hinge Jamb Assembly



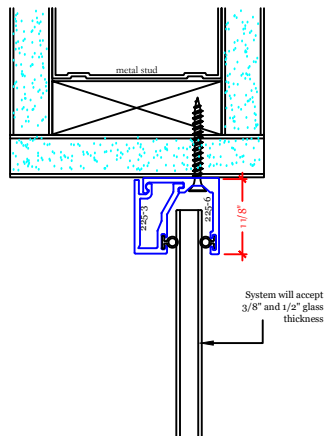
B Strike Jamb Assembly



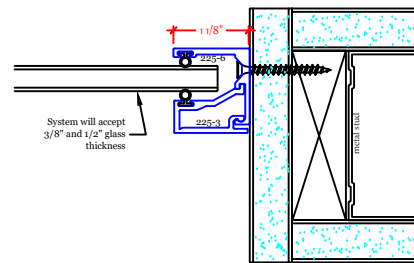
B1 Strike Jamb Assembly (Optional)



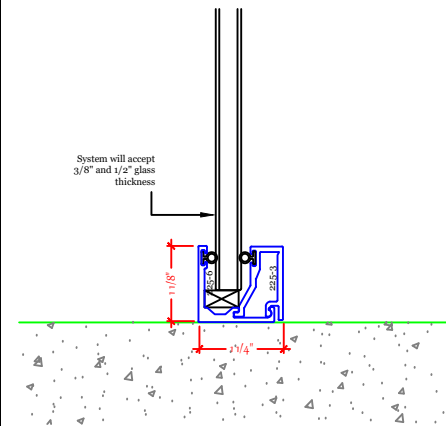
C Door Header Assembly



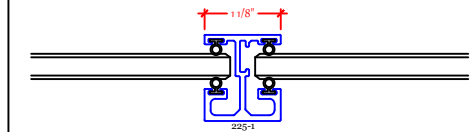
D Glazing Header



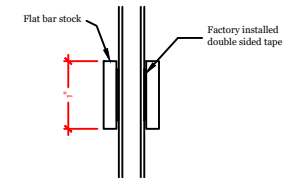
E Glass jamb



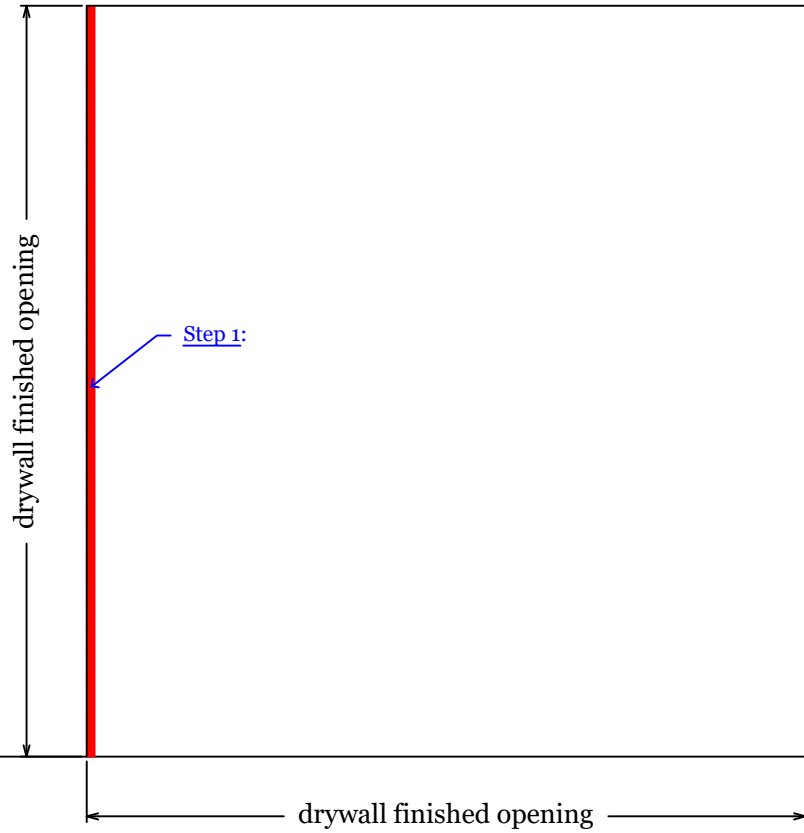
F Sill



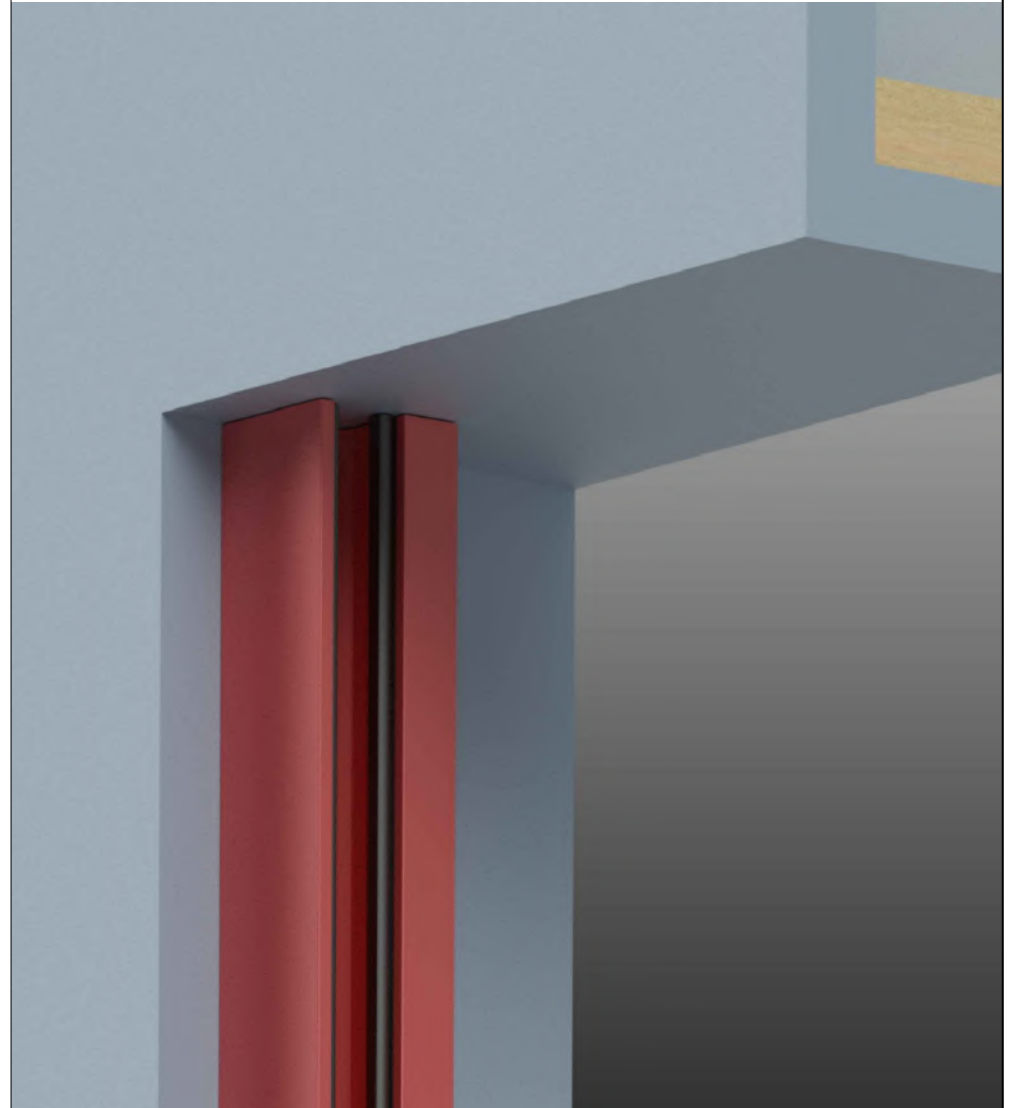
G Intermediate Vertical Mullion

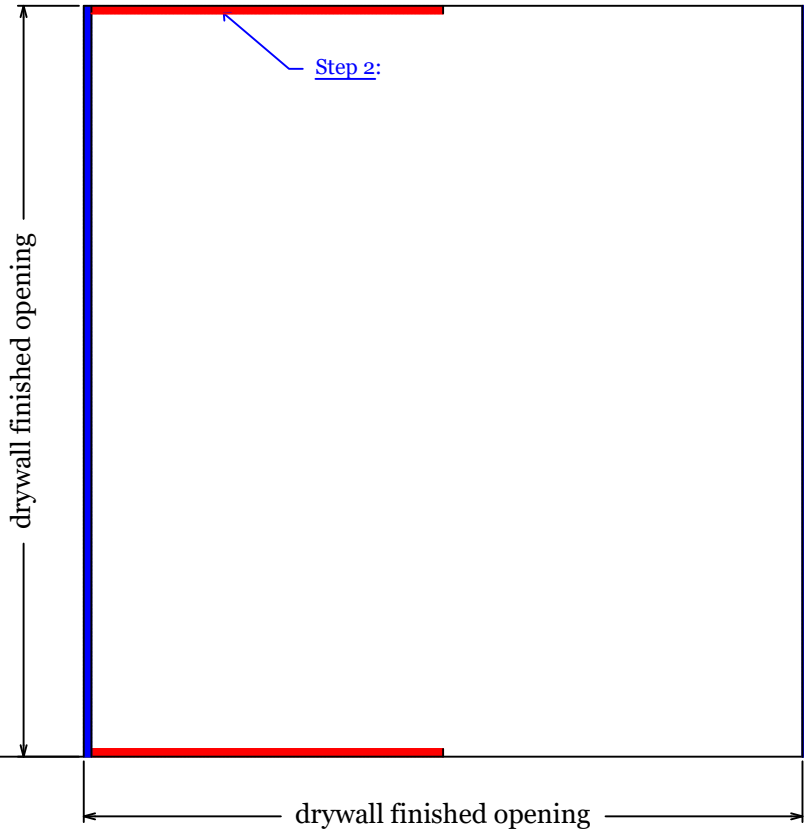


H Applied Horizontal Trim to Glass



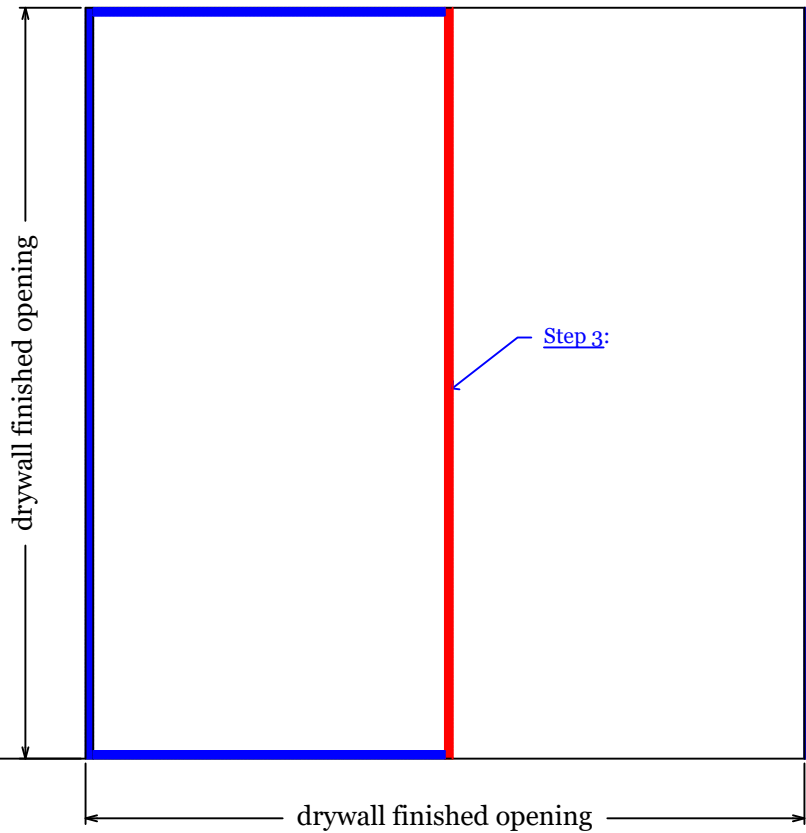
Step 1:
Install vertical glass jamb (floor to ceiling) each side of opening and secure to drywall with 1-5/8" drywall screws.





Step 2:
Determine the length of the horizontal glass mullions and cut one side (top and bottom) and secure to the ceiling with 1-5/8" drywall screws and to the floor with the provided 1-1/4" x 3/16" TapCons - Phillips head.





Step 3:

Cut the vertical intermediate glass jamb to length (floor to ceiling).

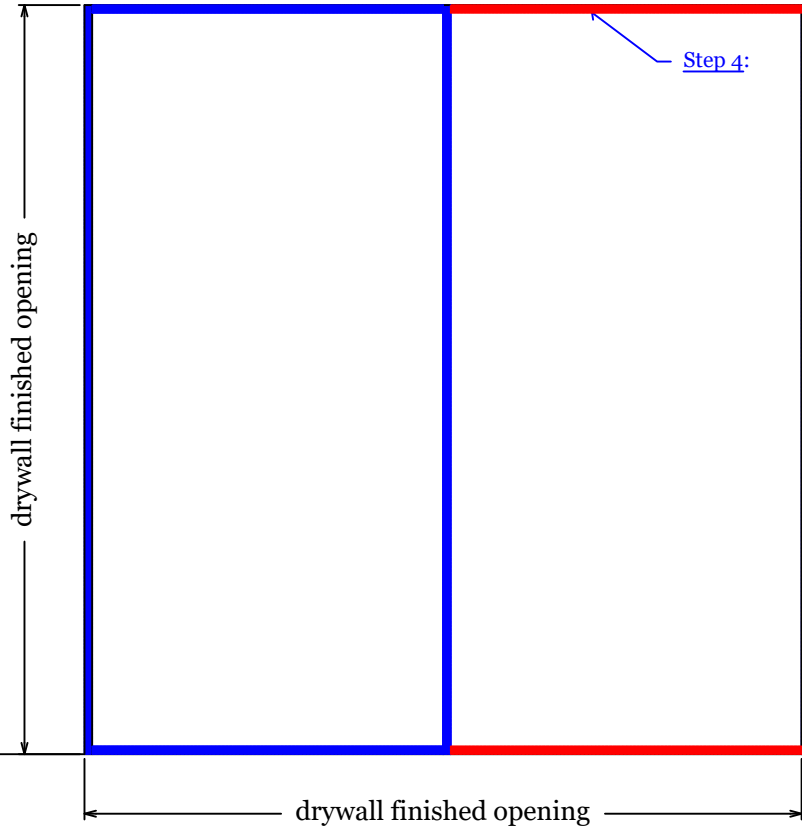
Install with 1-5/8" drywall screws to ceiling.

(Note that the screw will go in at an angle)

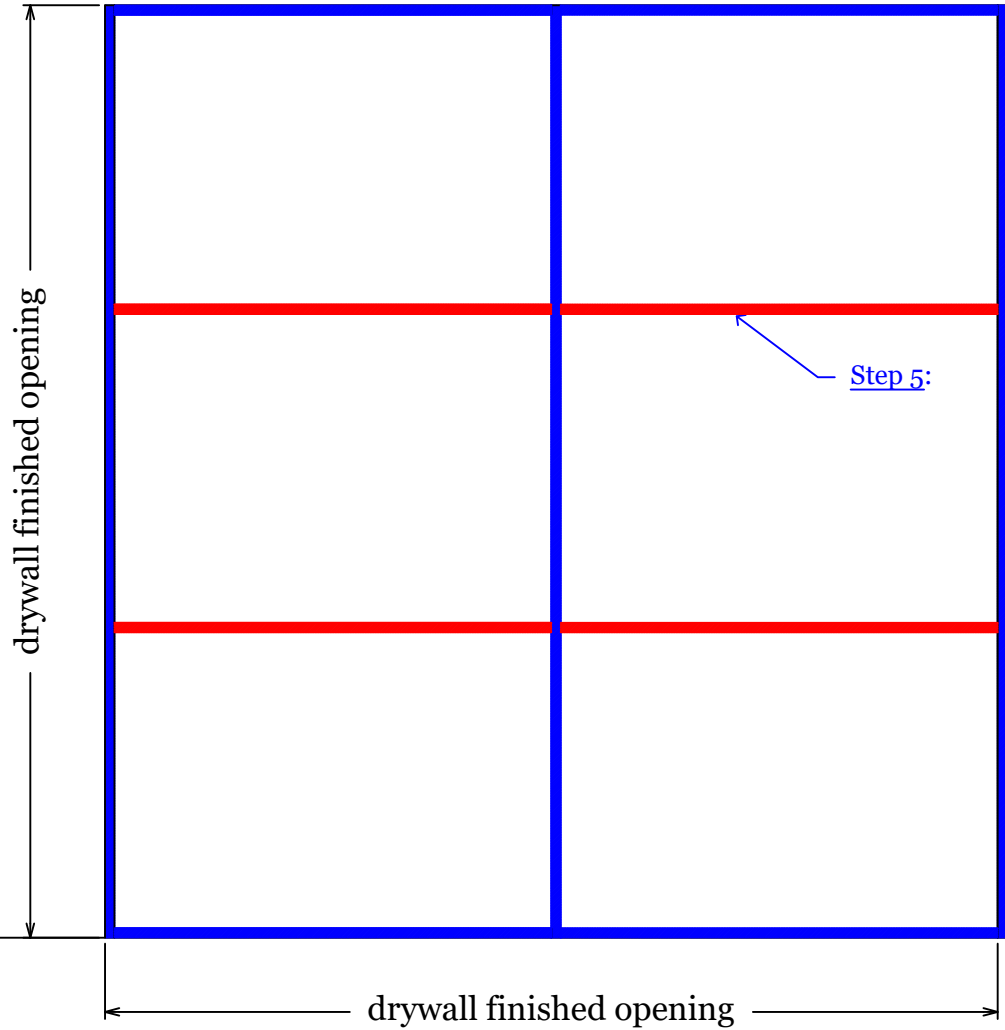
The bottom will be secured by the installation of the glass.

(Use a small bar clamp to hold the vertical in place while drilling and securing to the ceiling)





Step 4:
Determine the length of the remaining horizontal glass mullions and cut one side (top and bottom) and secure to ceiling and floor.
If there are additional intermediate vertical mullions, continue to install in a progressive manner.



Step 5:
After installation of glass, cut the horizontal trim to length and apply directly to glass on each side. (trim has factory applied double sided tape)