

2301 E. Vernon Ave.  
Vernon, CA 90058  
866.443.7258  
323.908.5430

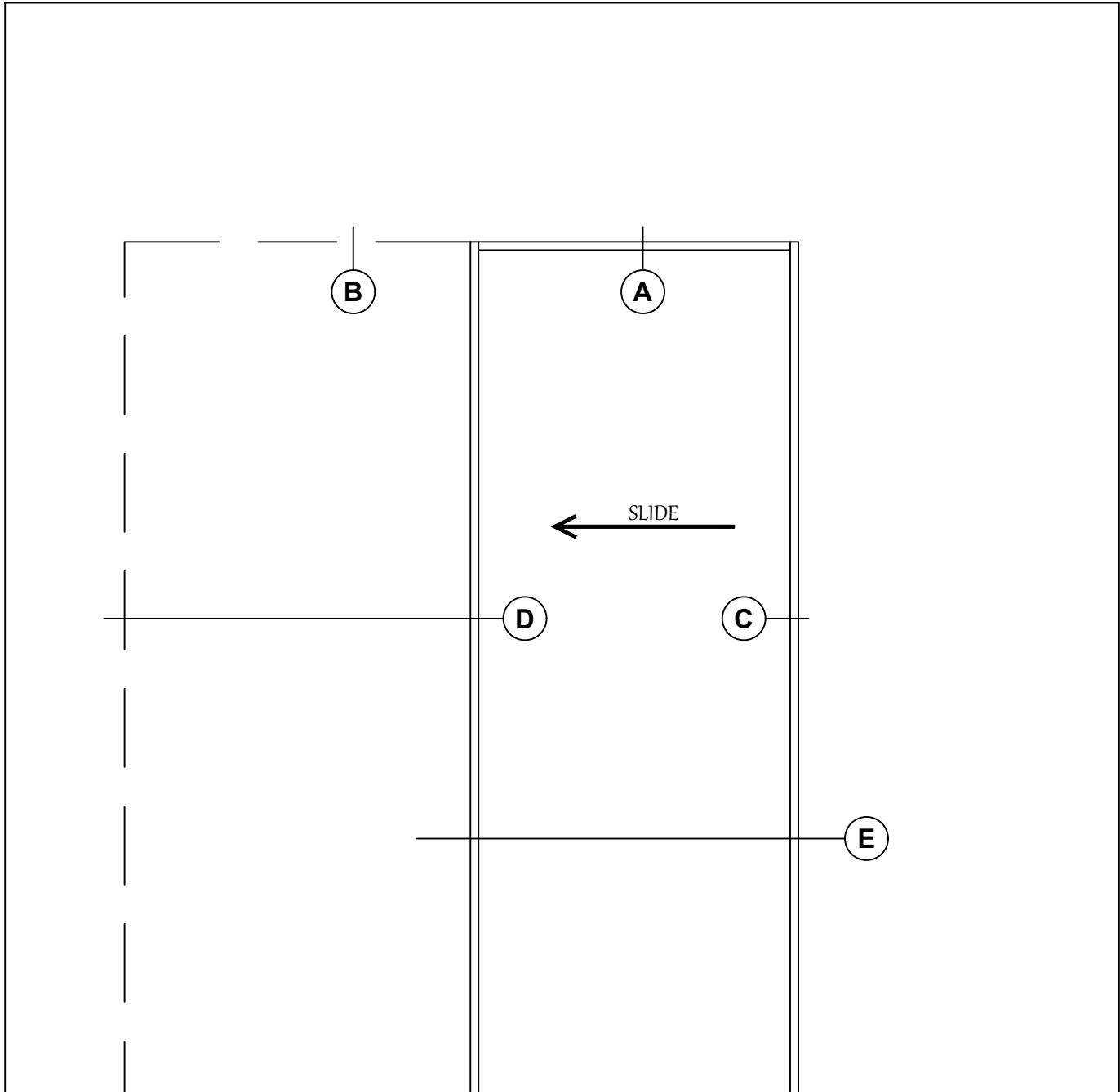
7601 Ambassador Row  
Suite 102  
Dallas, TX 75247  
214.295.2165

110 Viaduct Rd  
Stamford, CT 06907  
203.316.8033

7505 Bluff Point Drive  
Suite 100  
Houston, Texas 77086  
713.405.3354

[www.wilsonpart.com](http://www.wilsonpart.com)

## POCKET DOOR FRAME ---- 4-7/8" WALL THICKNESS ONLY



POCKET DOOR FRAME ELEVATION

2301 E. Vernon Ave.  
Vernon, CA 90058  
866.443.7258  
323.908.5430

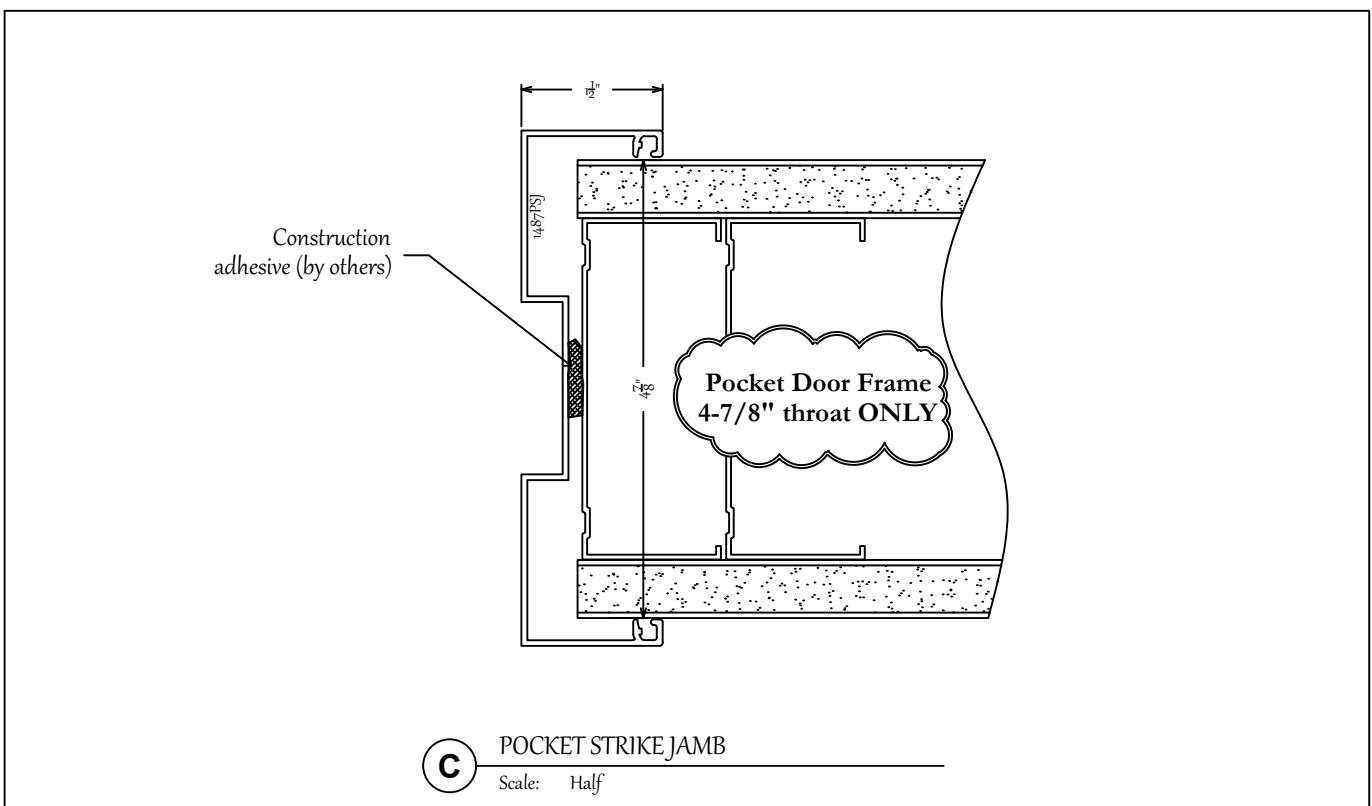
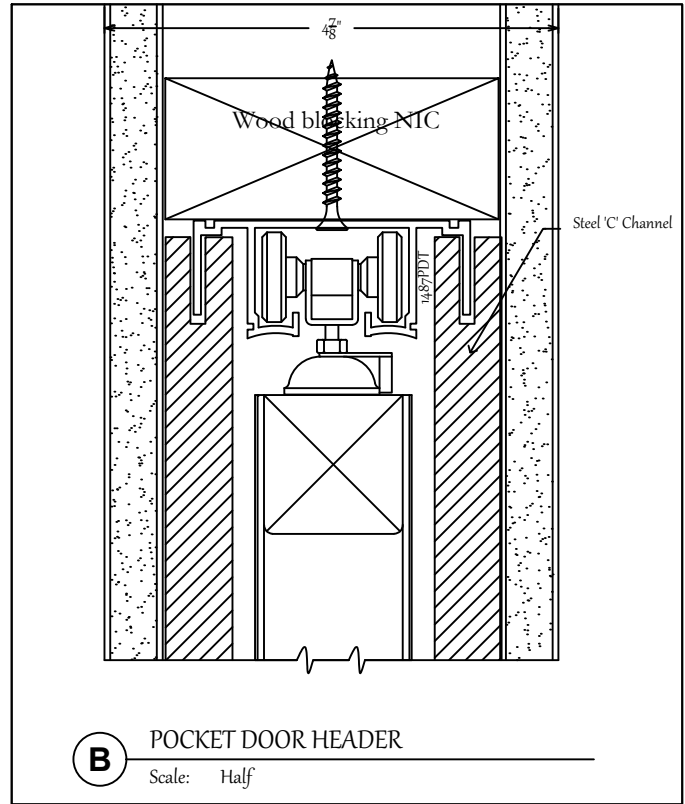
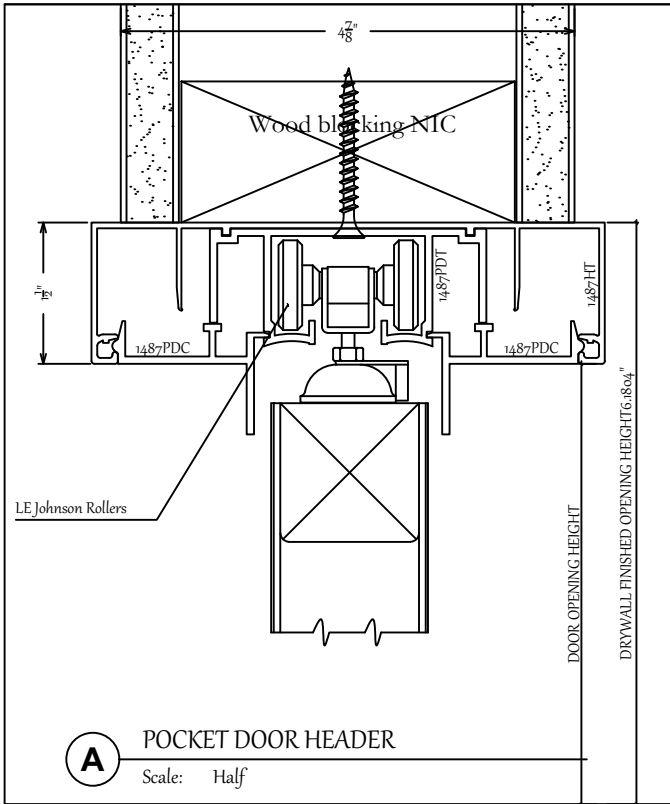
7601 Ambassador Row  
Suite 102  
Dallas, TX 75247  
214.295.2165

110 Viaduct Rd  
Stamford, CT 06907  
203.316.8033

7505 Bluff Point Drive  
Suite 100  
Houston, Texas 77086  
713.405.3354

[www.wilsonpart.com](http://www.wilsonpart.com)

## POCKET DOOR FRAME ---- 4-7/8" WALL THICKNESS ONLY



2301 E. Vernon Ave.  
Vernon, CA 90058  
866.443.7258  
323.908.5430

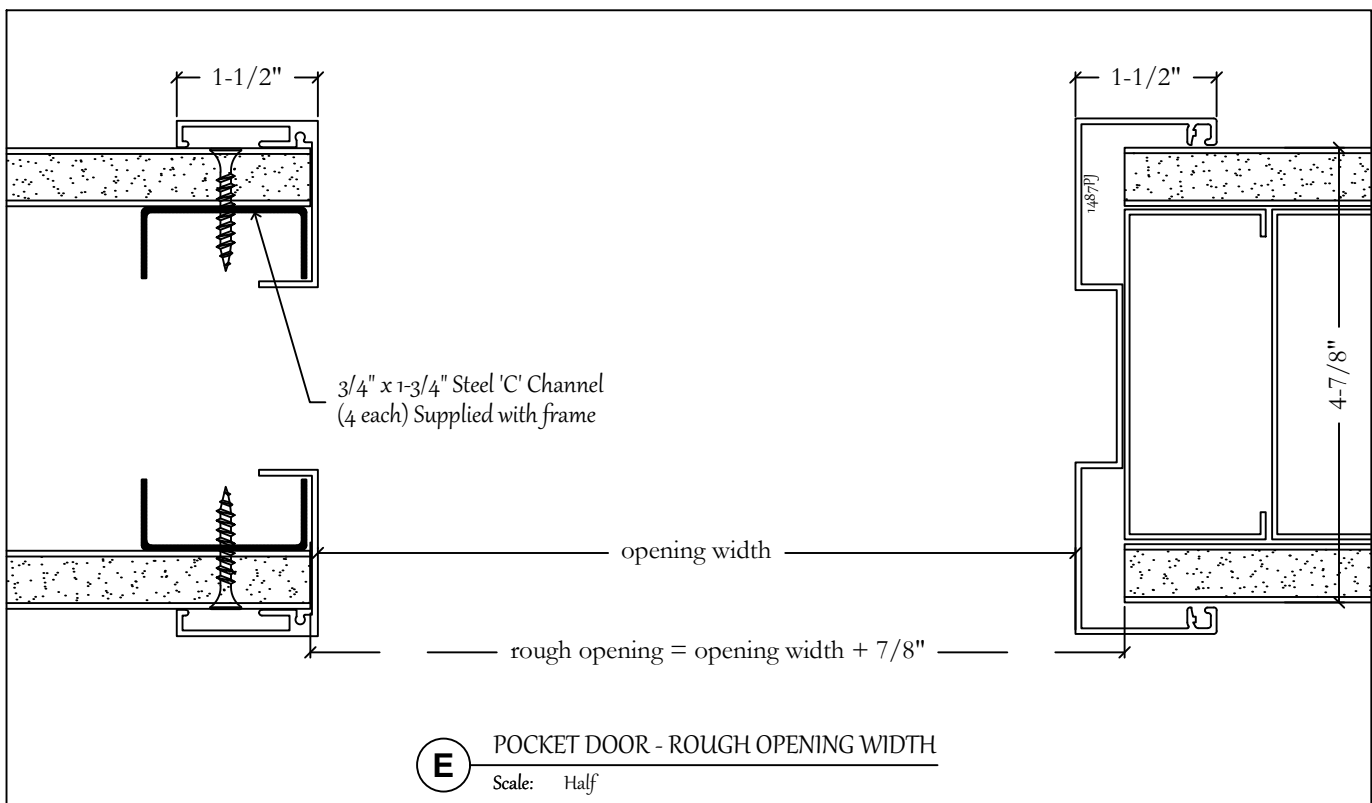
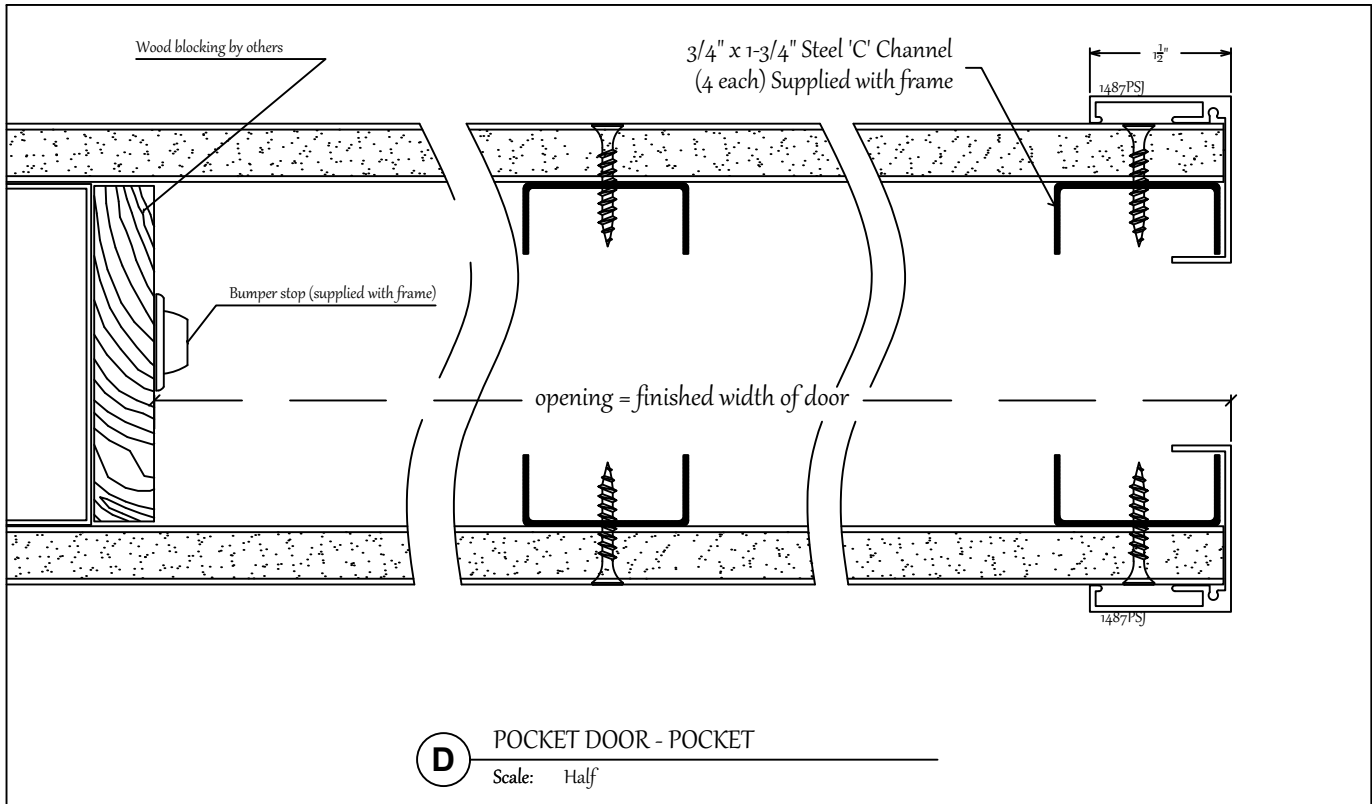
7601 Ambassador Row  
Suite 102  
Dallas, TX 75247  
214.295.2165

110 Viaduct Rd  
Stamford, CT 06907  
203.316.8033

7505 Bluff Point Drive  
Suite 100  
Houston, Texas 77086  
713.405.3354

www.wilsonpart.com

# POCKET DOOR FRAME ---- 4-7/8" WALL THICKNESS ONLY





2301 E. Vernon Ave.  
Vernon, CA 90058  
866.443.7258  
323.908.5430

7601 Ambassador Row  
Suite 102  
Dallas, TX 75247  
214.295.2165

110 Viaduct Rd  
Stamford, CT 06907  
203.316.8033

7505 Bluff Point Drive  
Suite 100  
Houston, Texas 77086  
713.405.3354

www.wilsonpart.com

## POCKET DOOR FRAME ---- 4-7/8" WALL THICKNESS ONLY

### Pocket Door Frame Installation Instructions

1. Install 487PJ (Pocket Jamb).
2. Install section of 487HT (head track) to finished opening size. (NOTE: The 487HT runs the width of the finished opening ONLY.) Attach at head and install the 487PDT (pocket door track) twice the door width. Place the two rollers into the track and attach the track at 12" on center.
3. Install the 3/4" x 1-1/2" wood studs (4 each) at the door opening +1/8" and at the center of the pocket, engaging the 487PDT and the steel floor clips (shown below). Install the wall stop to the wood blocking (by others). Install drywall to the wood studs to close up the opening.
4. Install the 2 pcs of 487PSJ to opening.
5. Install the plastic door guides at the edge of the outside edge of the 487PSJ.
6. Hang and adjust door. Install the 487PDC (pocket door closure) to each side of the 487PDT to finish off the opening.
7. Typical net door size is opening width + 1" and door height - 1" (which will yield a 1/2" undercut)

