

2301 E. Vernon Ave.
Vernon, CA 90058
866.443.7258
323.908.5430
323.908.5451 Fax

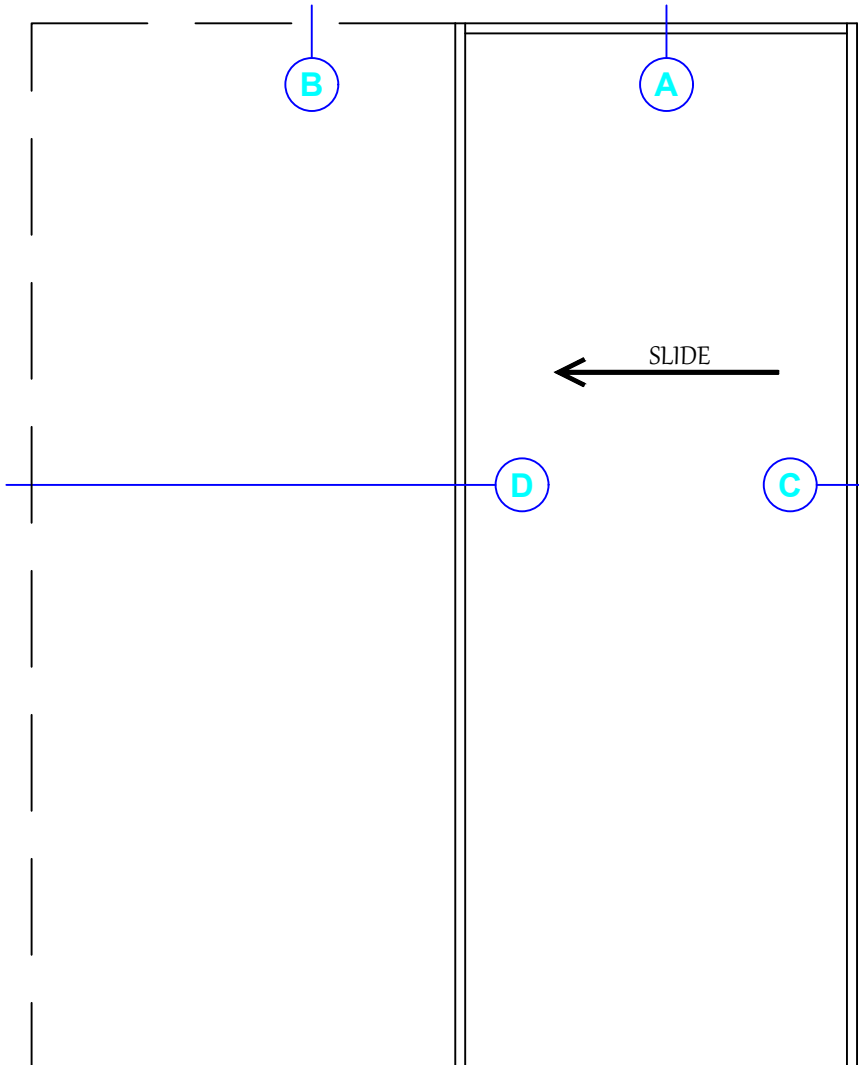
7601 Ambassador Row
Suite 102
Dallas, TX 75247
214.295.2165
214.496.0156 Fax

110 Viaduct Rd
Stamford, CT 06907
203.316.8033
203.316.0019 Fax

7505 Bluff Point Drive
Suite 100
Houston, Texas 77086
214-295-2165

www.wilsonpart.com

POCKET DOOR FRAME ---- 4-7/8" WALL THICKNESS ONLY



POCKET DOOR FRAME ELEVATION

2301 E. Vernon Ave.
Vernon, CA 90058
866.443.7258
323.908.5430
323.908.5451 Fax

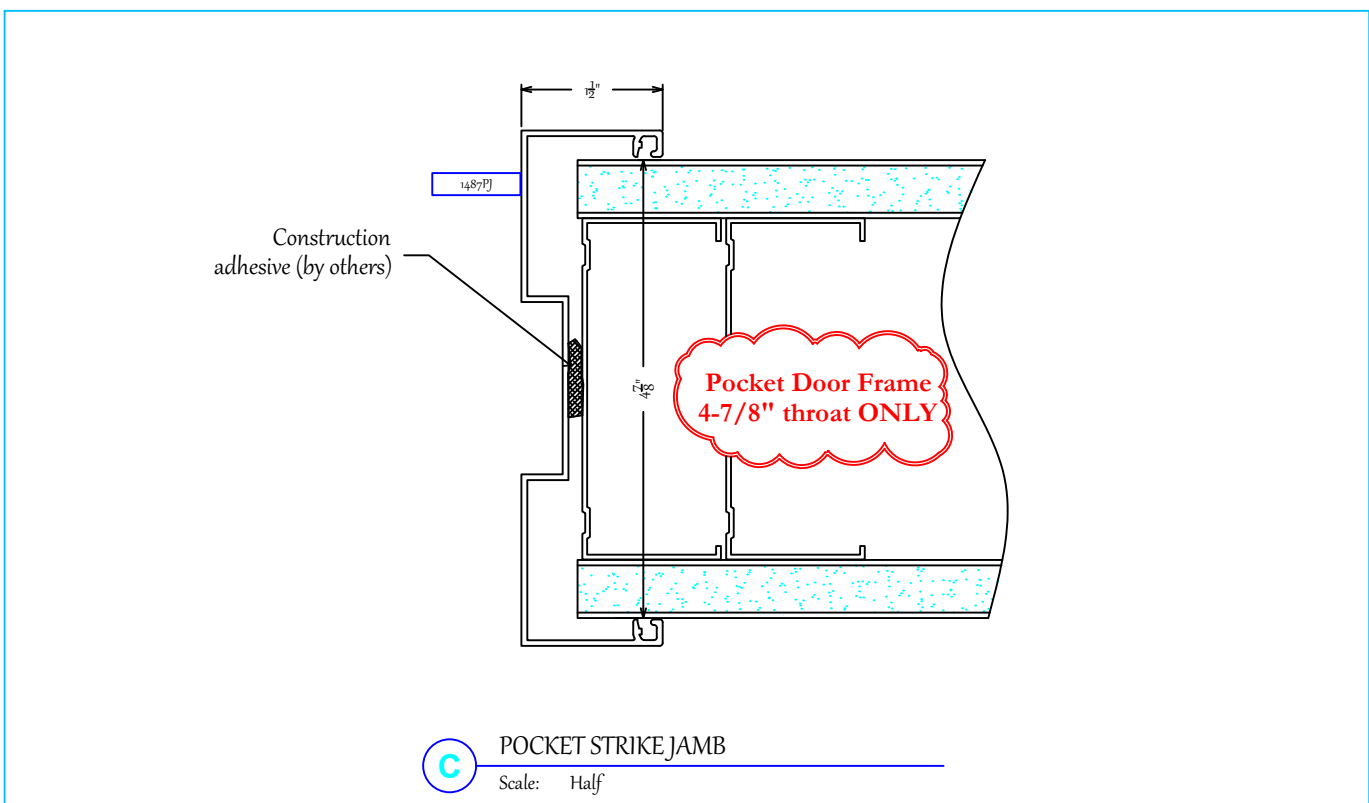
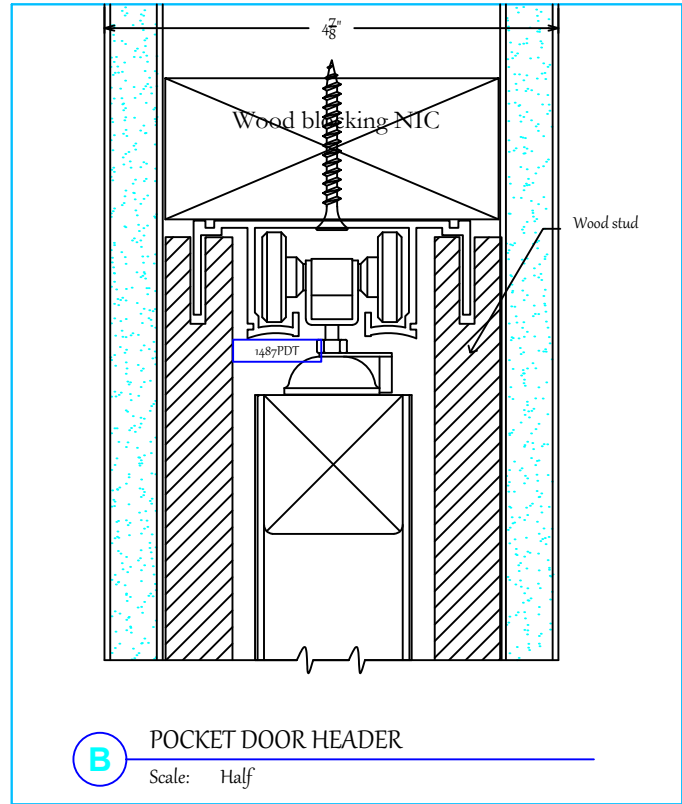
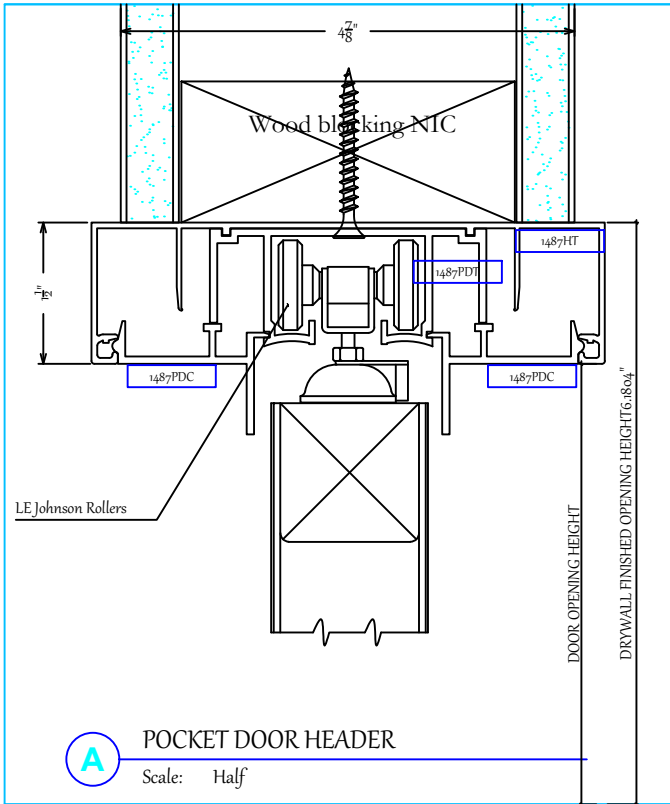
7601 Ambassador Row
Suite 102
Dallas, TX 75247
214.295.2165
214.496.0156 Fax

110 Viaduct Rd
Stamford, CT 06907
203.316.8033
203.316.0019 Fax

7505 Bluff Point Drive
Suite 100
Houston, Texas 77086
214-295-2165

www.wilsonpart.com

POCKET DOOR FRAME ---- 4-7/8" WALL THICKNESS ONLY



2301 E. Vernon Ave.
Vernon, CA 90058
866.443.7258
323.908.5430
323.908.5451 Fax

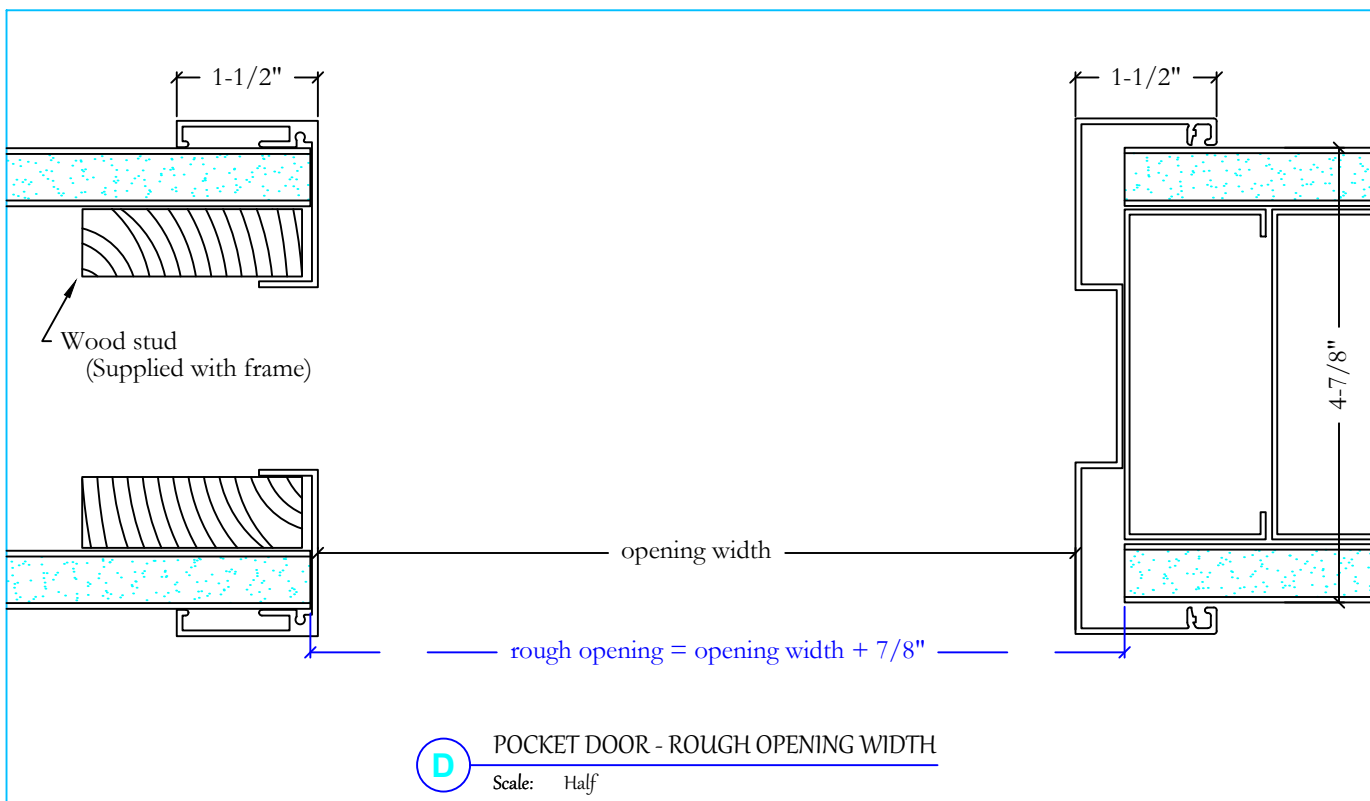
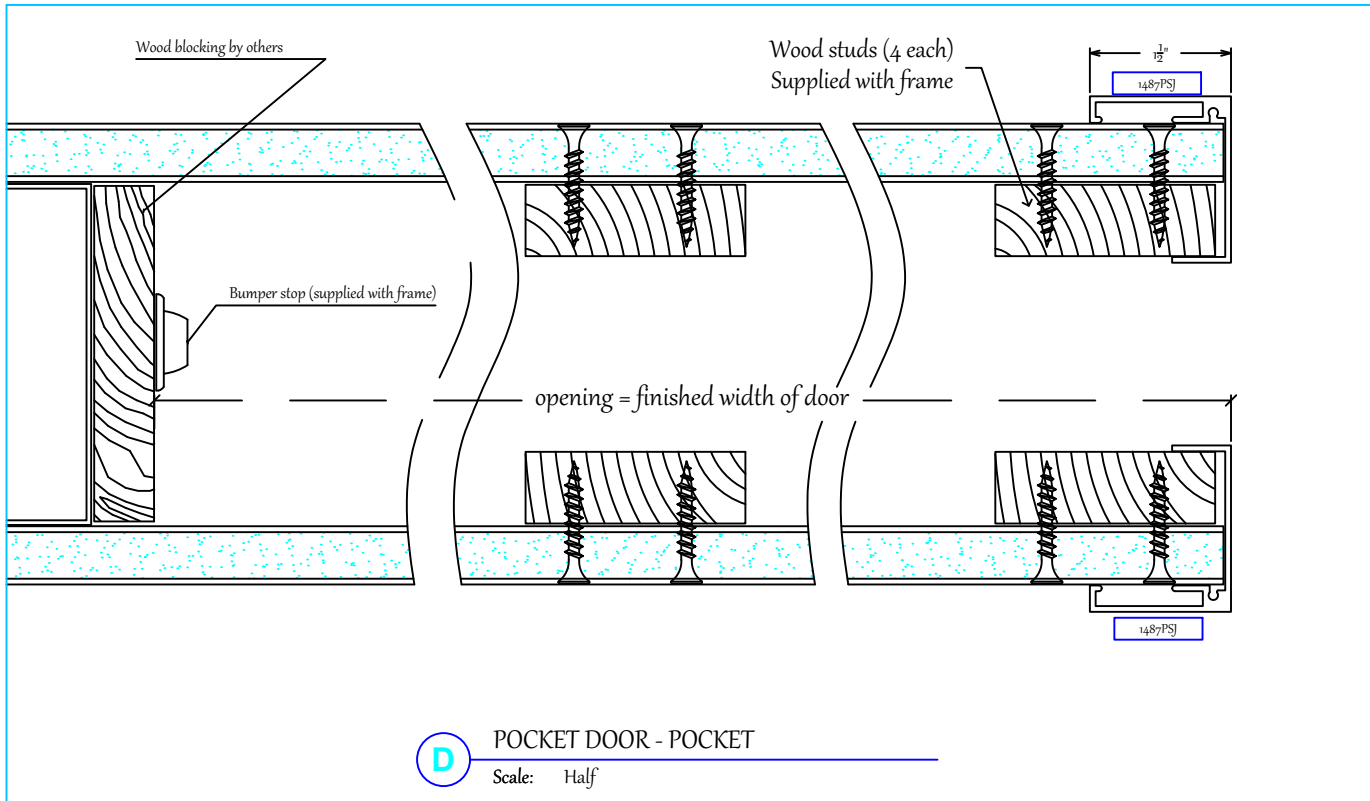
7601 Ambassador Row
Suite 102
Dallas, TX 75247
214.295.2165
214.496.0156 Fax

110 Viaduct Rd
Stamford, CT 06907
203.316.8033
203.316.0019 Fax

7505 Bluff Point Drive
Suite 100
Houston, Texas 77086
214-295-2165

www.wilsonpart.com

POCKET DOOR FRAME ---- 4-7/8" WALL THICKNESS ONLY



2301 E. Vernon Ave.
Vernon, CA 90058
866.443.7258
323.908.5430
323.908.5451 Fax

 7601 Ambassador Row
Suite 102
Dallas, TX 75247
214.295.2165
214.496.0156 Fax

 110 Viaduct Rd
Stamford, CT 06907
203.316.8033
203.316.0019 Fax

 7505 Bluff Point Drive
Suite 100
Houston, Texas 77086
214-295-2165

www.wilsonpart.com

POCKET DOOR FRAME ---- 4-7/8" WALL THICKNESS ONLY

Pocket Door Frame Installation Instructions

1. Install 487PJ (Pocket Jamb).
2. Install section of 487HT (head track) to finished opening size. (NOTE: The 487HT runs the width of the finished opening ONLY.) Attach at head and install the 487PDT (pocket door track) twice the door width. Place the two rollers into the track and attach the track at 12" on center.
3. Install the 3/4" x 1-1/2" wood studs (4 each) at the door opening +1/8" and at the center of the pocket, engaging the 487PDT and the steel floor clips (shown below). Install the wall stop to the wood blocking (by others). Install drywall to the wood studs to close up the opening.
4. Install the 2 pcs of 487PSJ to opening.
5. Install the plastic door guides at the edge of the outside edge of the 487PSJ.
6. Hang and adjust door. Install the 487PDC (pocket door closure) to each side of the 487PDT to finish off the opening.
7. Typical net door size is opening width + 1" and door height - 1" (which will yield a 1/2" undercut)

