

2301 E. Vernon Ave.  
Vernon, CA 90058  
866.443.7258  
323.908.5430  
323.908.5451 Fax

7601 Ambassador Row  
Suite 102  
Dallas, TX 75247  
214.295.2165  
214.496.0156 Fax

110 Viaduct Rd  
Stamford, CT 06907  
203.316.8033  
203.316.0019 Fax

[www.wilsonpart.com](http://www.wilsonpart.com)

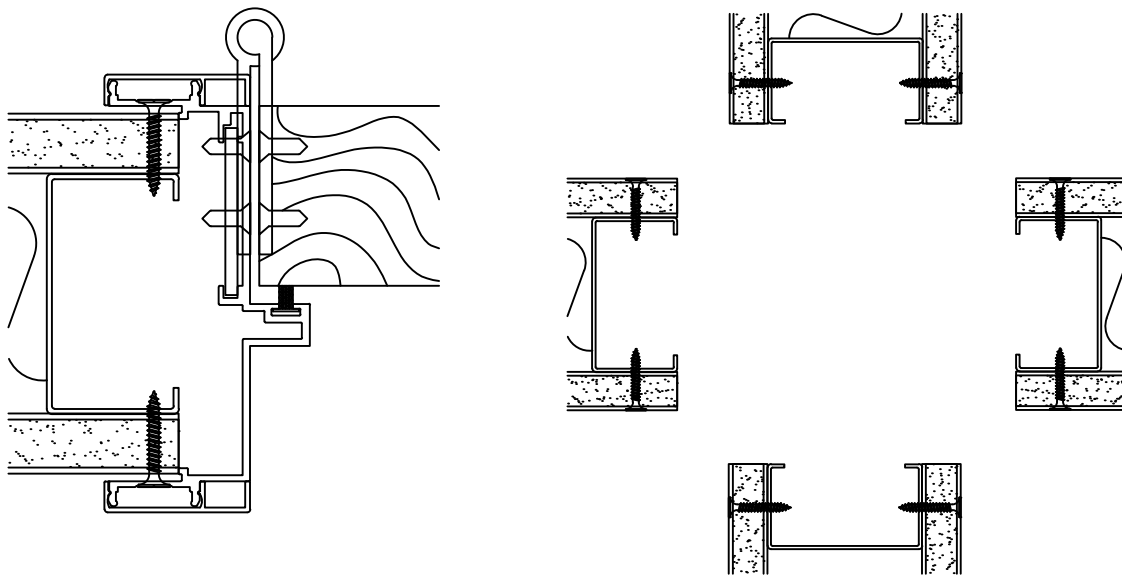
## **GENERAL FRAMING INSTRUCTIONS FOR SNAP-ON TRIM PROFILE**

THE WILSON SNAP-ON TRIM PROFILE FRAMES ARE DESIGNED TO FIT OVER CONVENTIONAL DRYWALL CONSTRUCTION.

CARE SHOULD BE TAKEN BY THE DRYWALL INSTALLER TO KEEP THE SPECIFIED WALL THICKNESS AS CLOSE TO NOMINAL AS POSSIBLE, AND NEVER MORE THAN 1/8" THICKER THAN NOMINAL. WALLS GREATER THAN NOMINAL MAY CAUSE TRIM TO NOT FIT PROPERLY AND GAPING AT JOINTS.

BEFORE INSTALLING FRAMES, MAKE SURE THAT THE ROUGH OPENINGS ARE THE PROPER SIZE AND THAT THE WALL THICKNESS IS WITHIN 1/8" OF NOMINAL.

### **DRYWALL CONSTRUCTION**



- ALL STUDS SHOULD BE REVERSED SO THAT THE OPEN END OF THE STUDS ARE FACING IN TOWARDS THE OPENING.
- THE EDGE OF THE STUDS SHOULD BE FLUSH WITH THE EDGE OF THE DRYWALL AND CARE SHOULD BE TAKEN TO MAKE SURE THAT THE DRYWALL IS SQUARE AND PLUMB.
- LOW PROFILE HEAD SCREWS ARE REQUIRED WHEN ATTACHING THE STUDS AND STUD TRACK. CARE MUST BE TAKEN TO MAKE SURE THAT THE DRYWALL DOES NOT FLARE AT THE CORNER CONDITIONS.

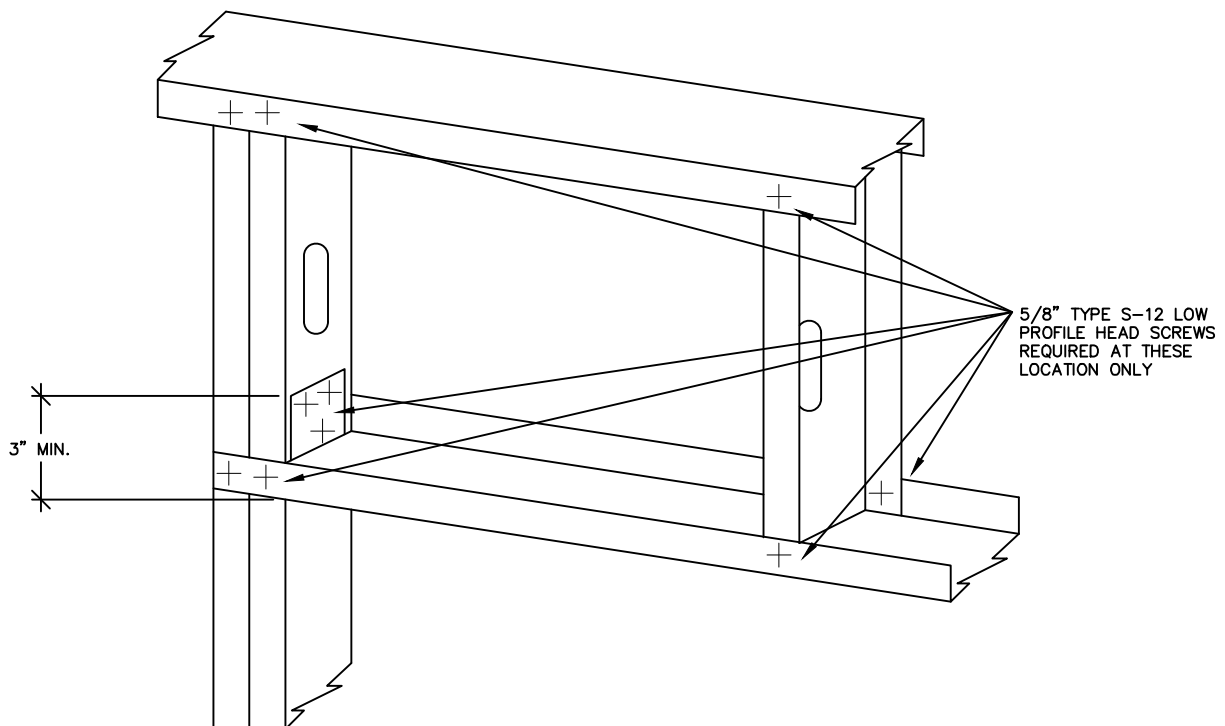
## STEEL FRAMING INSTRUCTIONS FOR SNAP-ON TRIM PROFILE

### STEEL FRAMING & INSTALLATION REQUIREMENTS ALUMINUM DOOR FRAMES

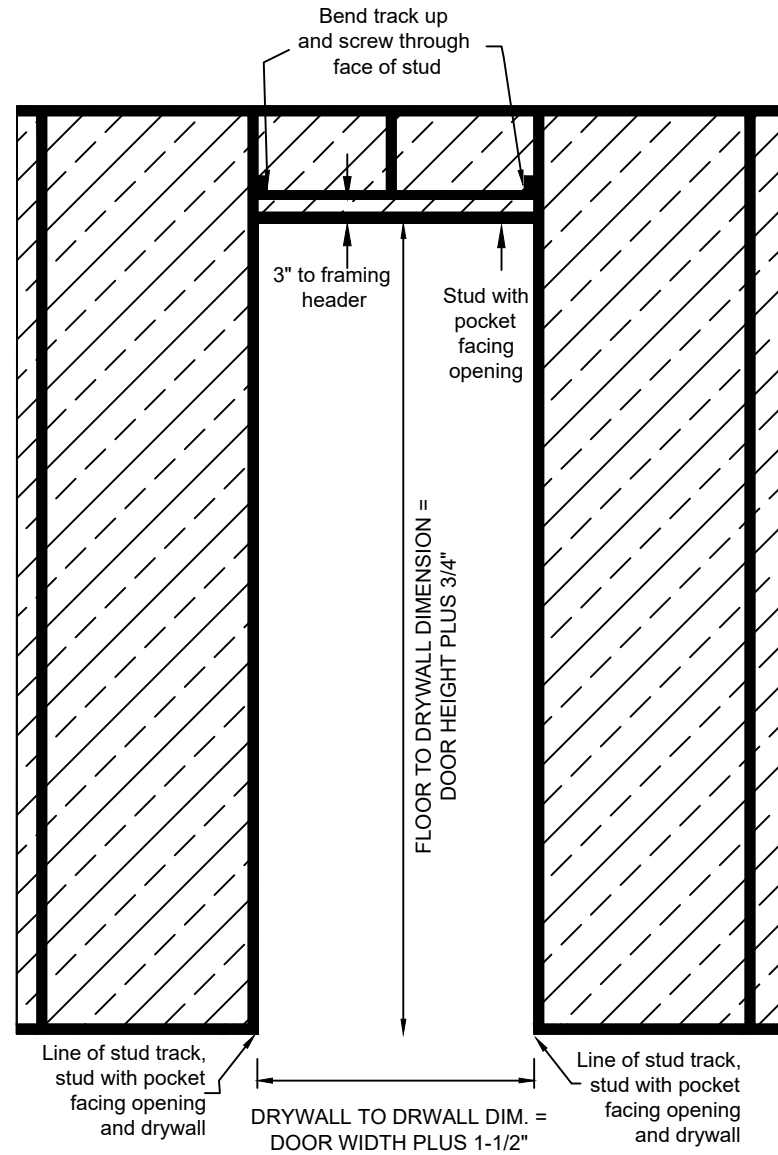
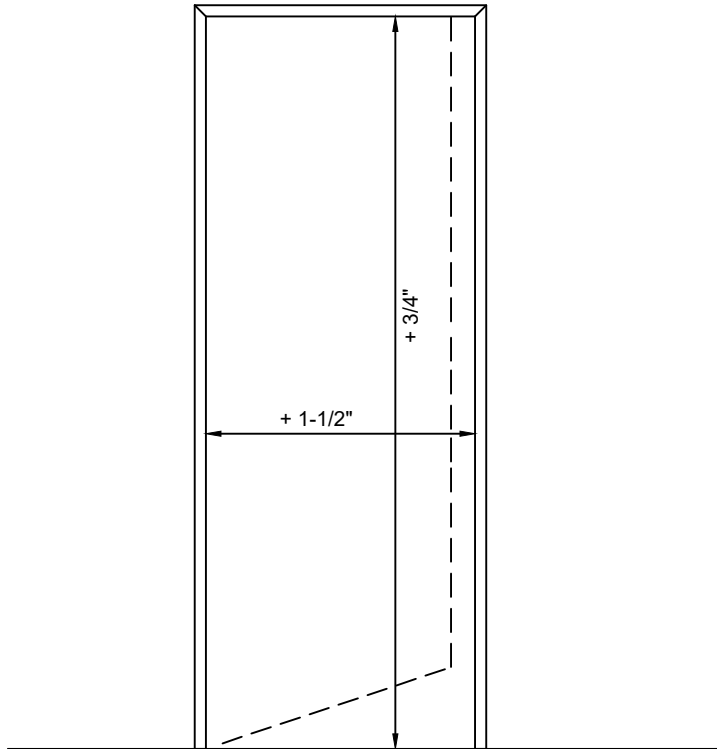
"DOOR OPENINGS SHOULD BE ROUGH FRAMED WITH STEEL STUDS AND RUNNERS. POSITION FLOOR TO CEILING HEIGHT STUDS VERTICALLY, ADJACENT TO FRAMES AND ANCHOR SECURELY TO TOP AND BOTTOM RUNNERS WITH 5/8" TYPE S-12 LOW PROFILE HEAD SCREWS. INSTALL ADDITIONAL STUDS AT JAMBS. FABRICATE SILL AND HEADER SECTIONS FROM USG 20 GAUGE STEEL RUNNERS AND INSTALL OVER LESS THAN CEILING HEIGHT DOOR FRAMES. FABRICATE FROM A SECTION OF RUNNER CUT TO LENGTH, APPROXIMATELY 6" LONGER THAN THE ROUGH OPENING. SLIT THE WEB AND BEND UP TO ALLOW ATTACHMENT TO ADJACENT VERTICAL STUDS. SECURELY ATTACH THROUGH WEB TO STUDS WITH 5/8" TYPE S-12 LOW PROFILE HEAD SCREWS. ATTACH FLANGE ONTO FACE OF JAMB STUD WITH 2 EACH 5/8" TYPE S-12 LOW PROFILE HEAD SCREWS."

– UNITED STATES GYPSUM COMPANY GYPSUM CONSTRUCTION HANDBOOK

### REQUIRED FRAMING



# Drywall Framing Instructions



**WilsonPartitions®**

2301 E. Vernon Ave.  
 Vernon, CA 90058  
 866.443.7258  
 323.908.5430  
 323.908.5451 Fax

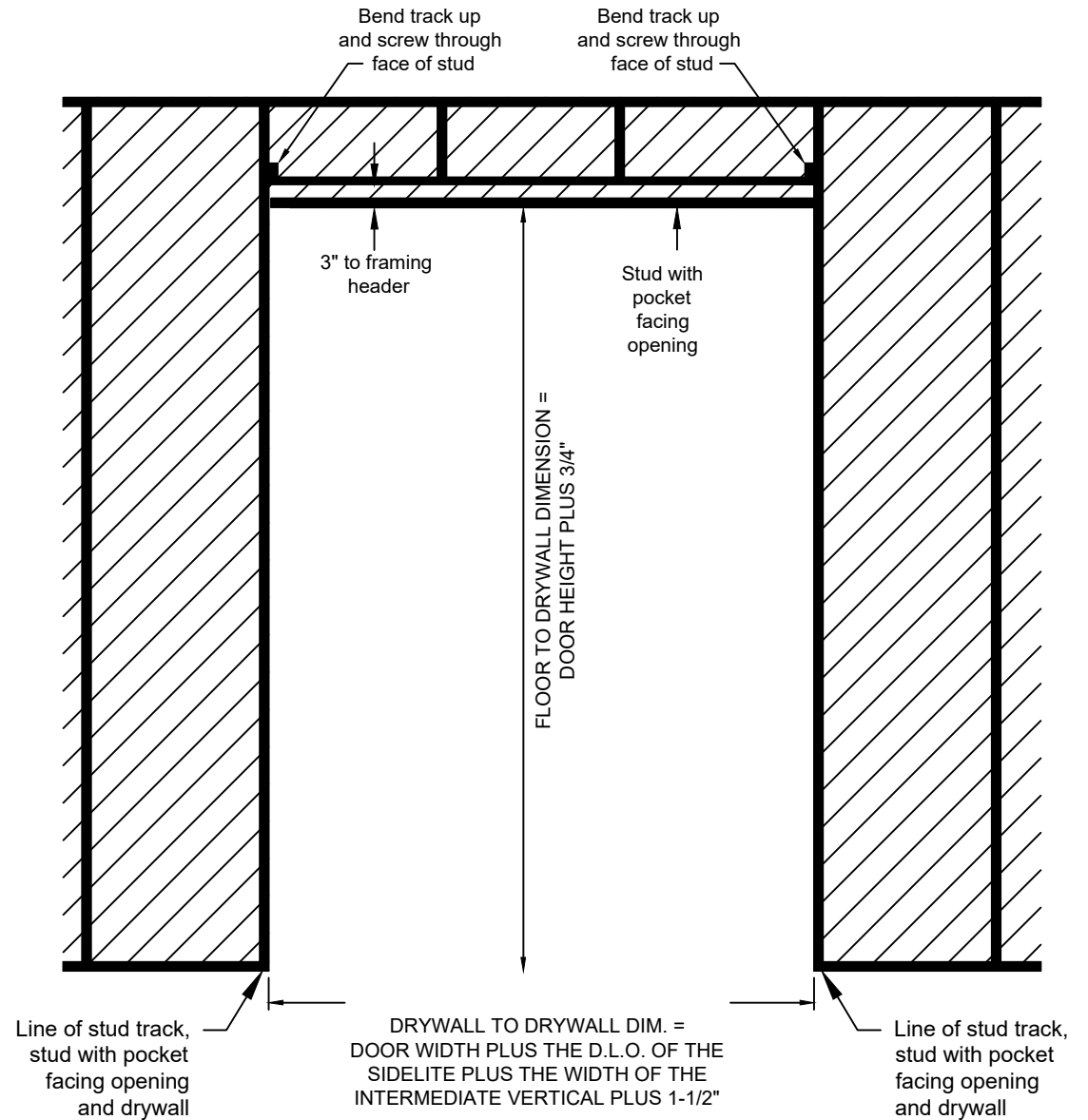
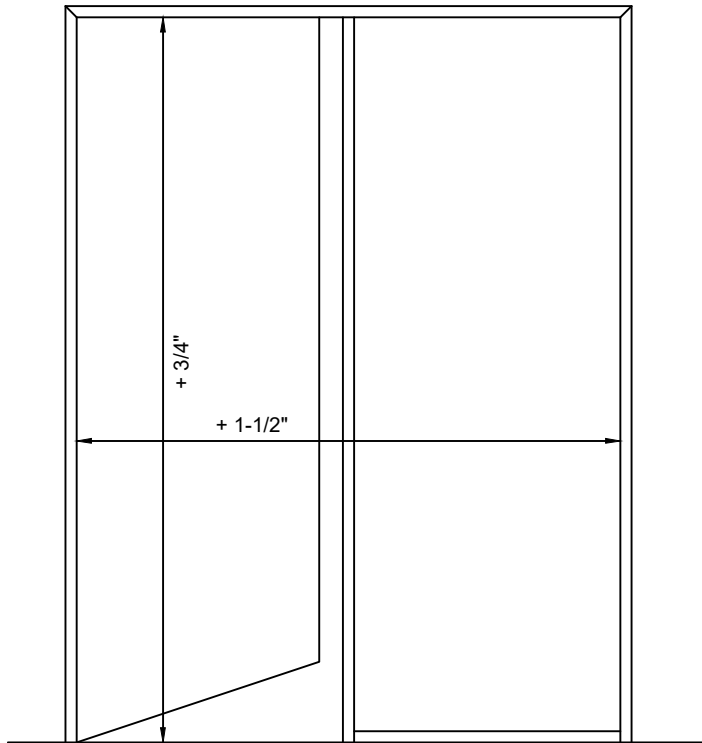
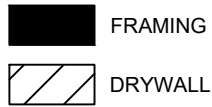
7601 Ambassador Row, Suite 102  
 Dallas, TX 75247  
 214.295.2165  
 214.496.0156 Fax

110 Viaduct Road  
 Stamford, CT 06907  
 203.316.8033  
 203.316.0019 Fax

**Snap-on Trim - Door frame**

[www.wilsonpart.com](http://www.wilsonpart.com)

# Drywall Framing Instructions



**WilsonPartitions®**

2301 E. Vernon Ave.  
 Vernon, CA 90058  
 866.443.7258  
 323.908.5430  
 323.908.5451 Fax

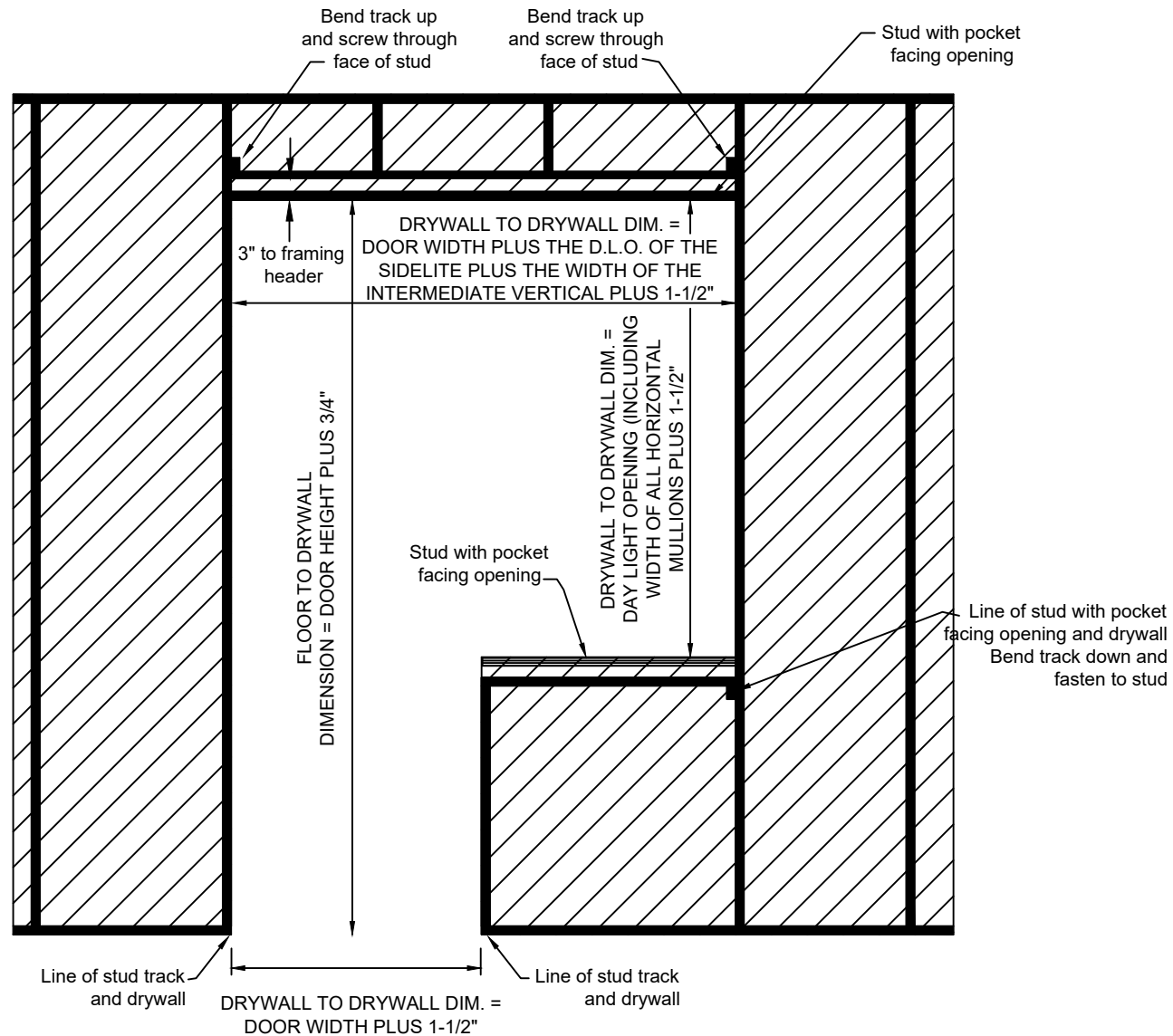
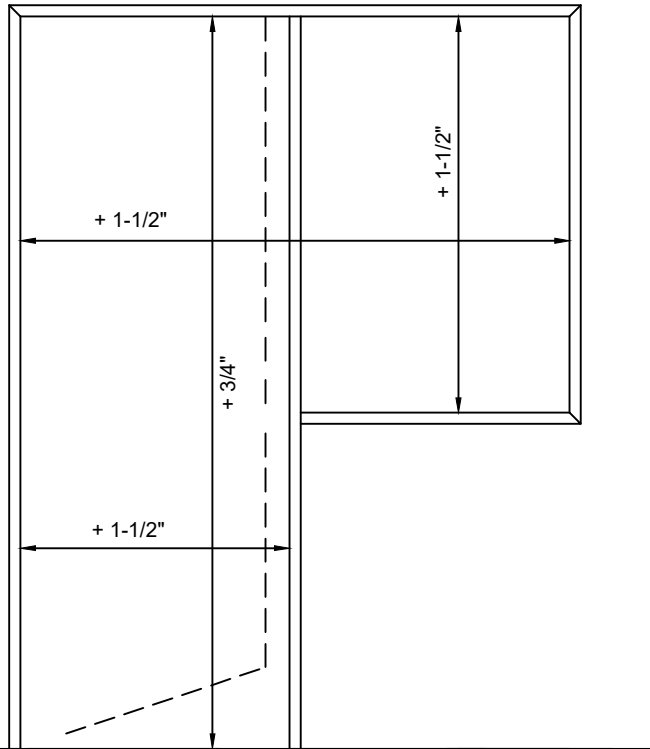
7601 Ambassador Row, Suite 102  
 Dallas, TX 75247  
 214.295.2165  
 214.496.0156 Fax

110 Viaduct Road  
 Stamford, CT 06907  
 203.316.8033  
 203.316.0019 Fax

**Snap-on Trim - Door frame with sidelite**

[www.wilsonpart.com](http://www.wilsonpart.com)

# Drywall Framing Instructions



**WilsonPartitions®**

2301 E. Vernon Ave.  
 Vernon, CA 90058  
 866.443.7258  
 323.908.5430  
 323.908.5451 Fax

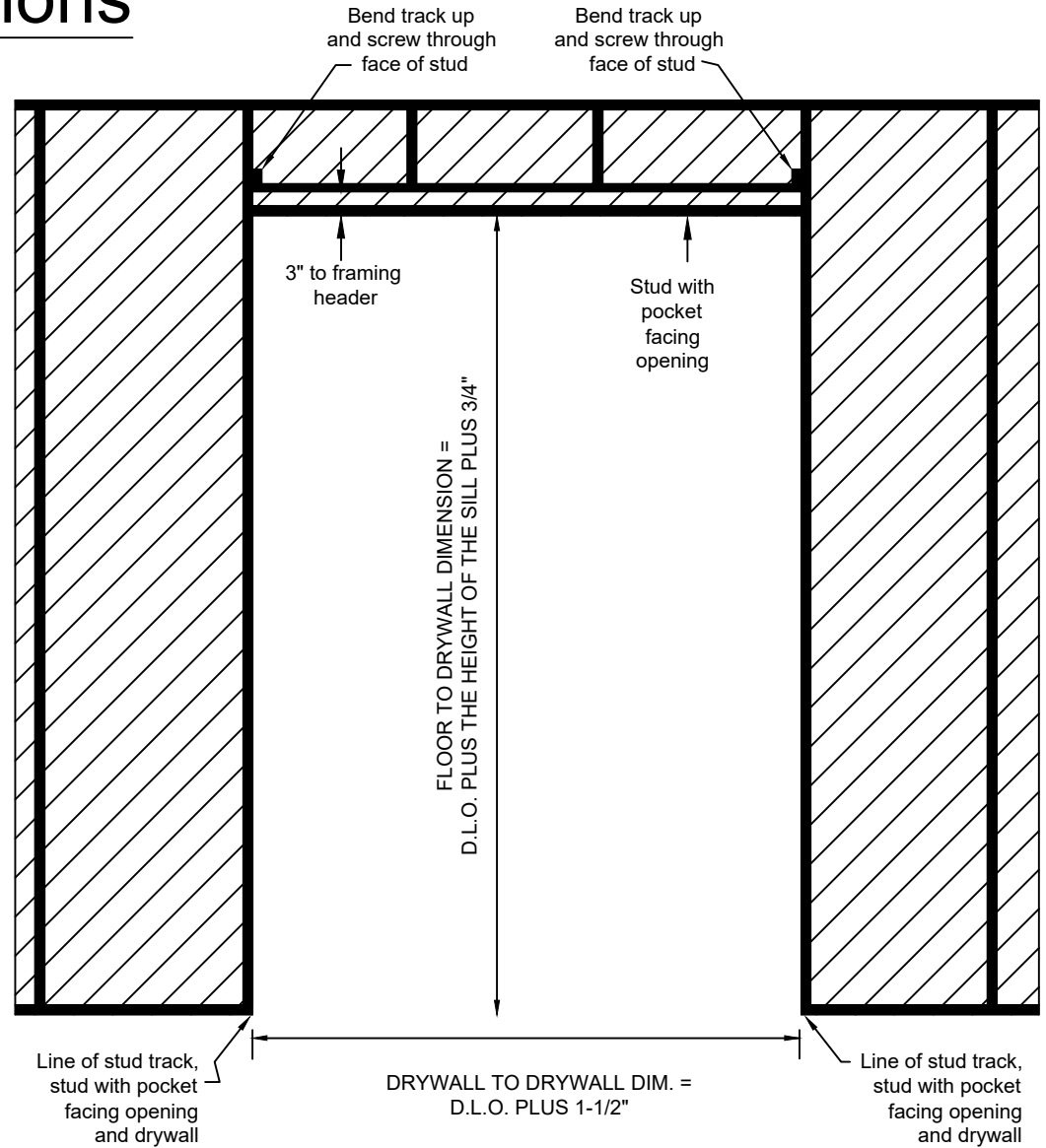
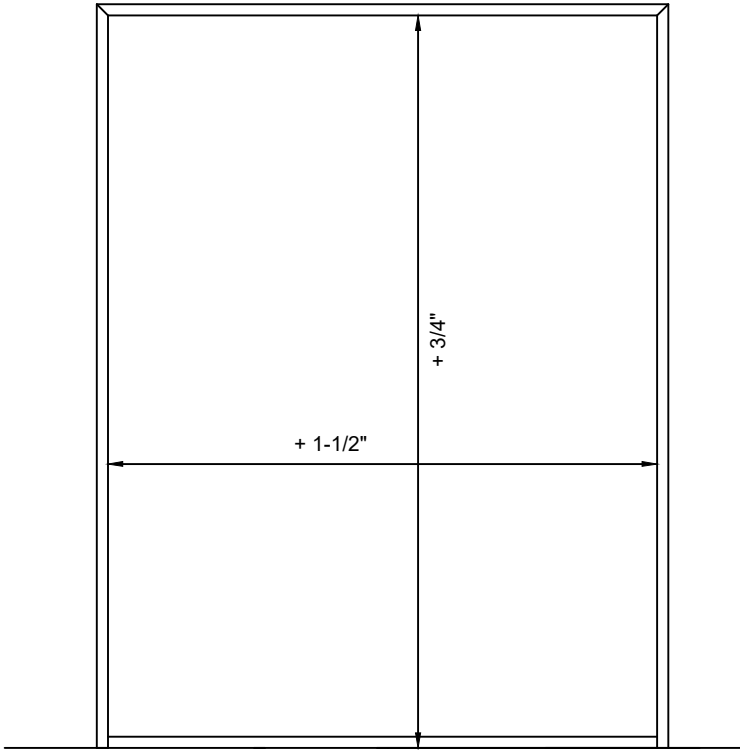
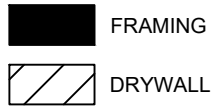
7601 Ambassador Row, Suite 102  
 Dallas, TX 75247  
 214.295.2165  
 214.496.0156 Fax

110 Viaduct Road  
 Stamford, CT 06907  
 203.316.8033  
 203.316.0019 Fax

Snap-on Trim - Door frame with partial height sidelite

[www.wilsonpart.com](http://www.wilsonpart.com)

# Drywall Framing Instructions



**WilsonPartitions®**

2301 E. Vernon Ave.  
 Vernon, CA 90058  
 866.443.7258  
 323.908.5430  
 323.908.5451 Fax

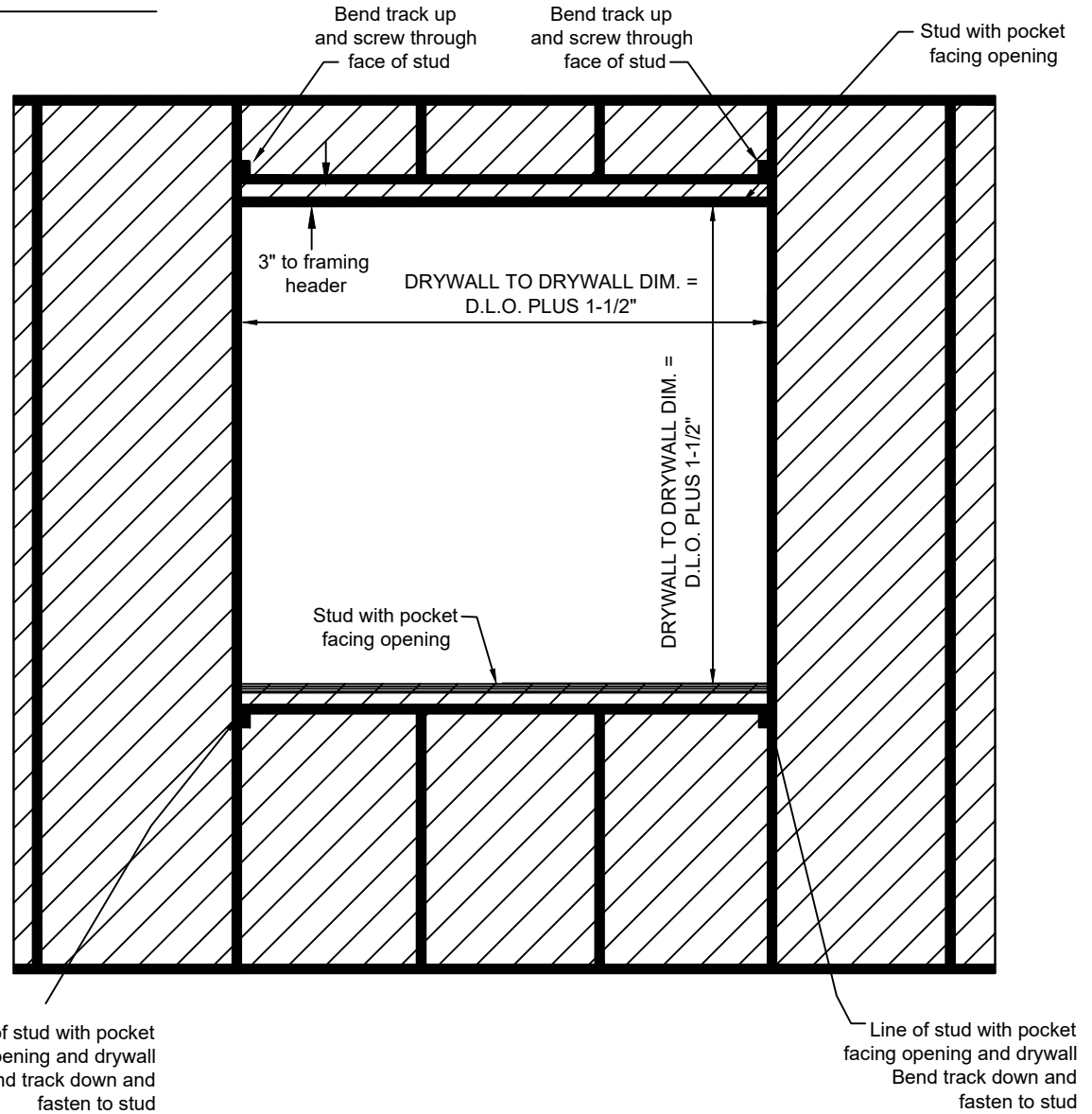
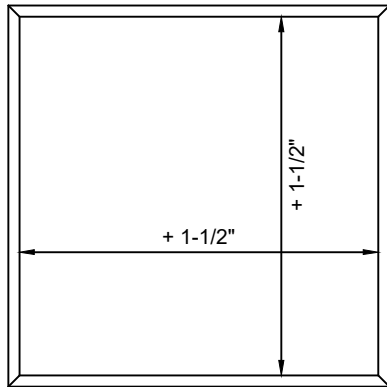
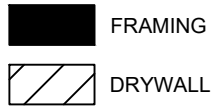
7601 Ambassador Road, Suite 102  
 Dallas, TX 75247  
 214.295.2165  
 214.496.0156 Fax

110 Viaduct Road  
 Stamford, CT 06907  
 203.316.8033  
 203.316.0019 Fax

**Snap-on Trim - Borrowed lite**

[www.wilsonpart.com](http://www.wilsonpart.com)

# Drywall Framing Instructions



**WilsonPartitions®**

2301 E. Vernon Ave.  
 Vernon, CA 90058  
 866.443.7258  
 323.908.5430  
 323.908.5451 Fax

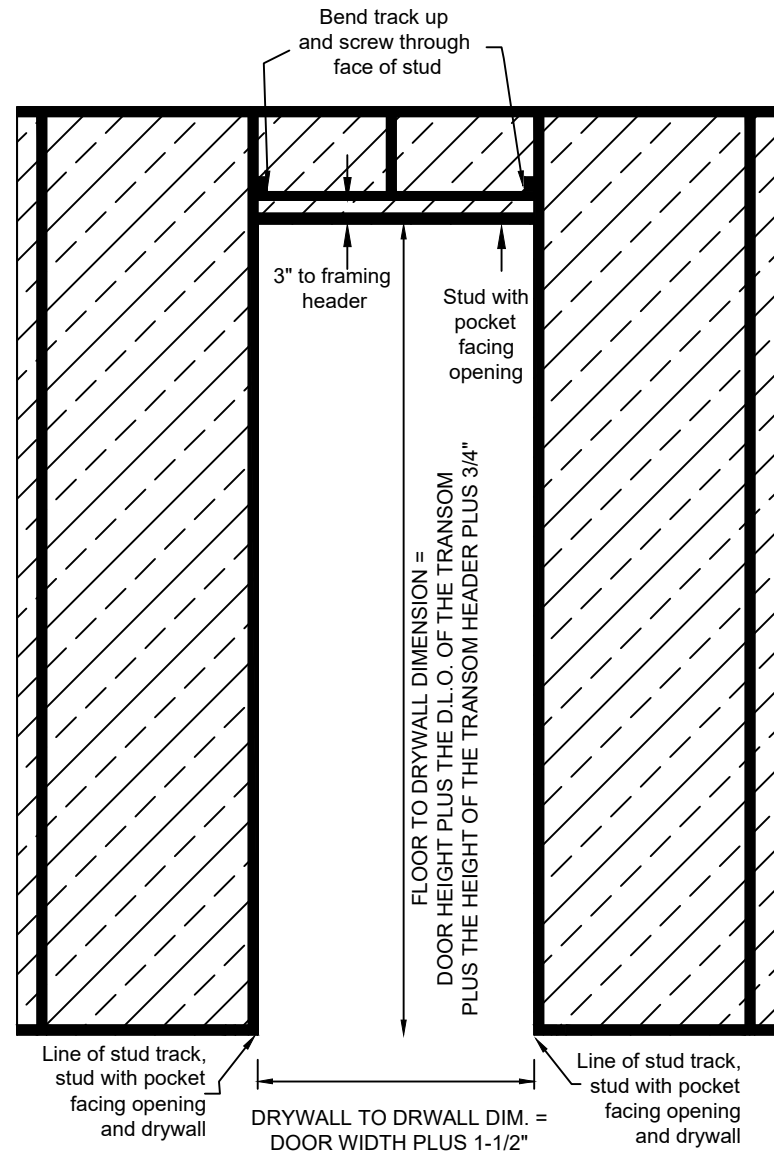
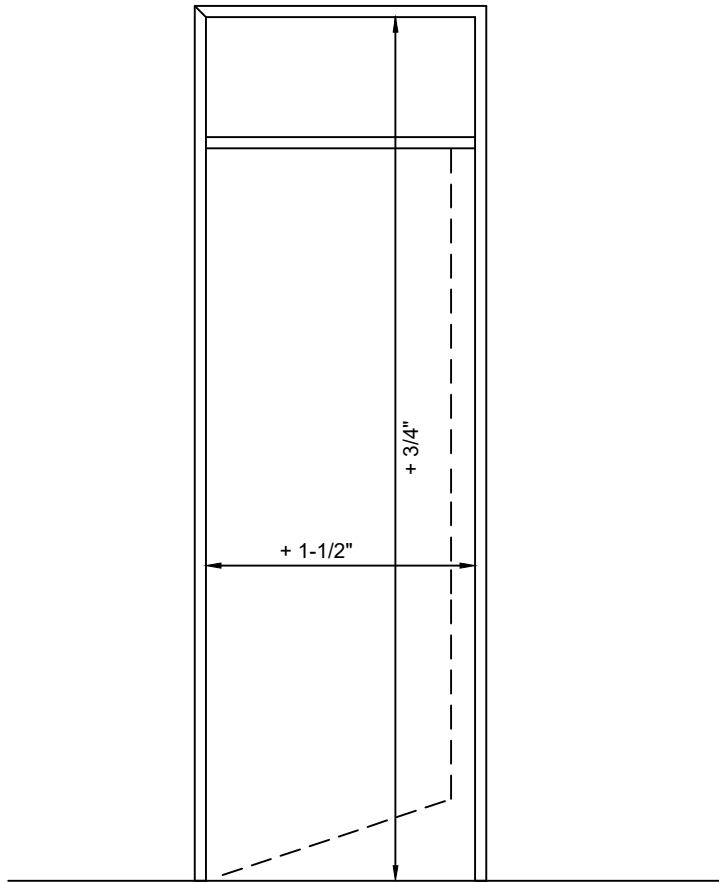
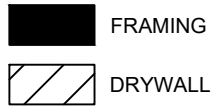
7601 Ambassador Row, Suite 102  
 Dallas, TX 75247  
 214.295.2165  
 214.496.0156 Fax

110 Viaduct Road  
 Stamford, CT 06907  
 203.316.8033  
 203.316.0019 Fax

**Snap-on Trim - Partial height borrowed lite**

[www.wilsonpart.com](http://www.wilsonpart.com)

# Drywall Framing Instructions



**WilsonPartitions®**

2301 E. Vernon Ave.  
Vernon, CA 90058  
866.443.7258  
323.908.5430  
323.908.5451 Fax

7601 Ambassador Row, Suite 102  
Dallas, TX 75247  
214.295.2165  
214.496.0156 Fax

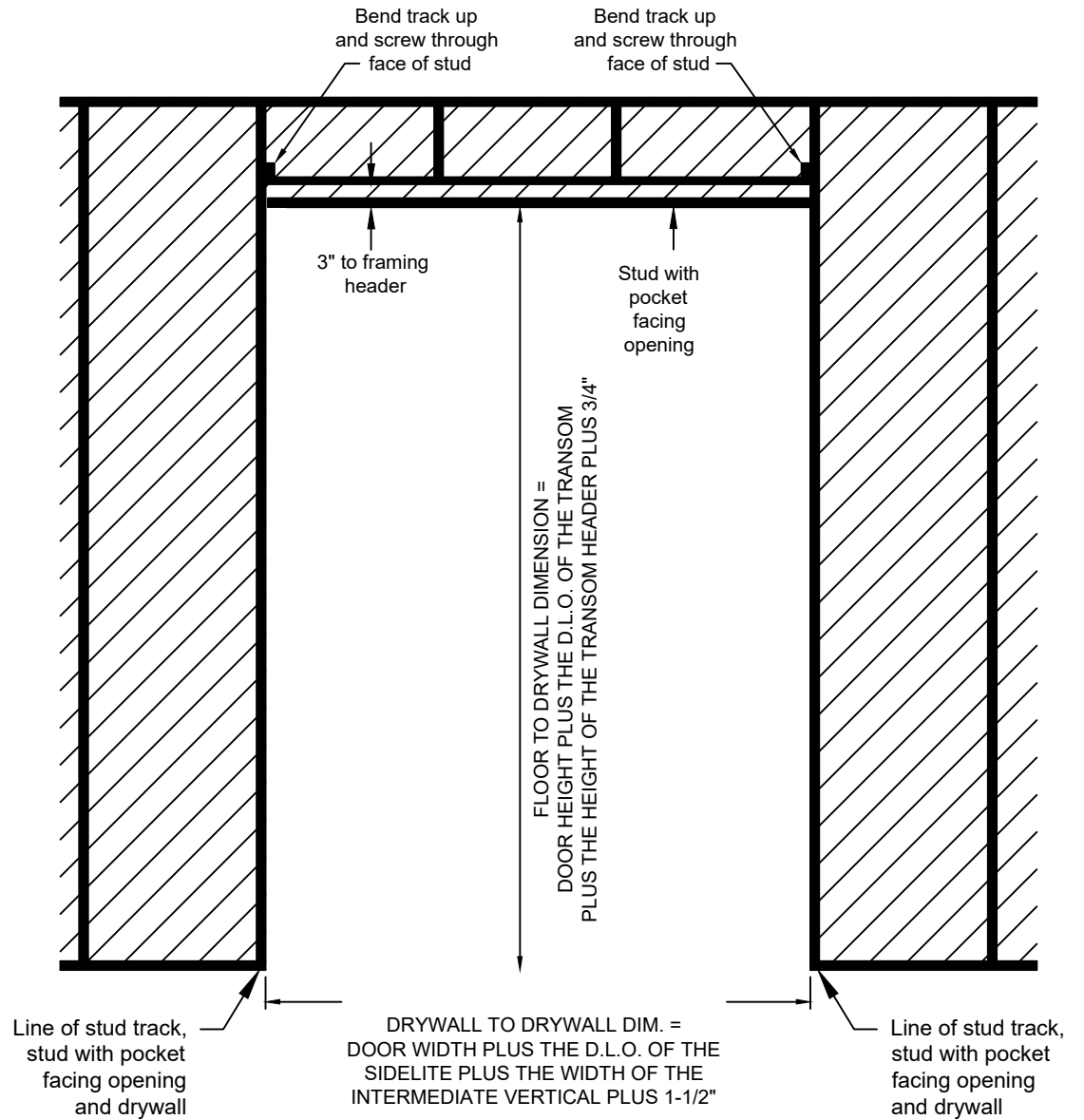
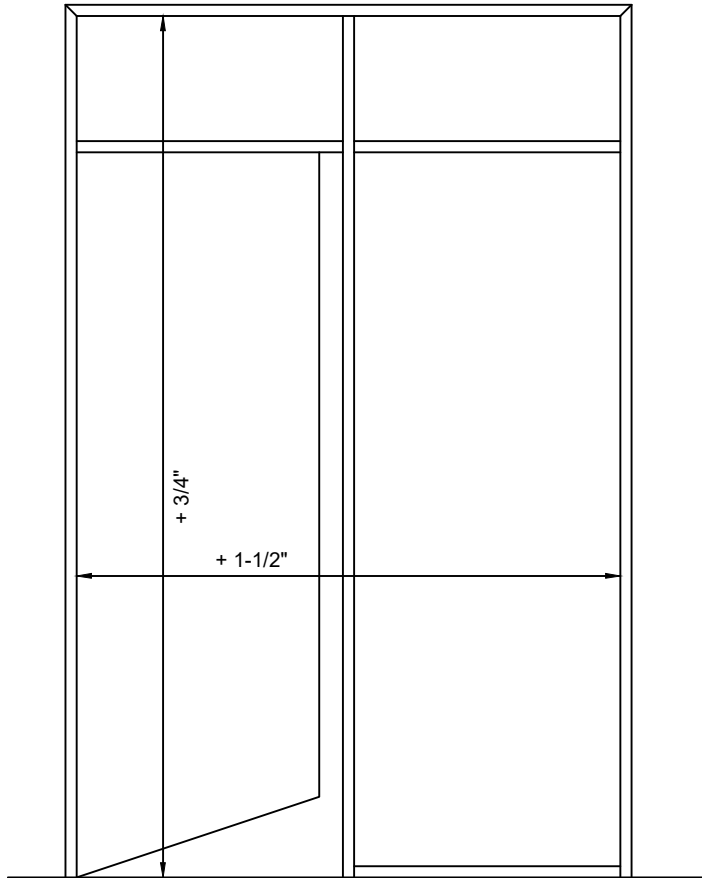
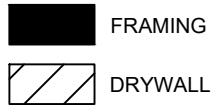
110 Viaduct Road  
Stamford, CT 06907  
203.316.8033  
203.316.0019 Fax

**Snap-on Trim - Door frame with transom**

[www.wilsonpart.com](http://www.wilsonpart.com)



# Drywall Framing Instructions



**WilsonPartitions®**

2301 E. Vernon Ave.  
 Vernon, CA 90058  
 866.443.7258  
 323.908.5430  
 323.908.5451 Fax

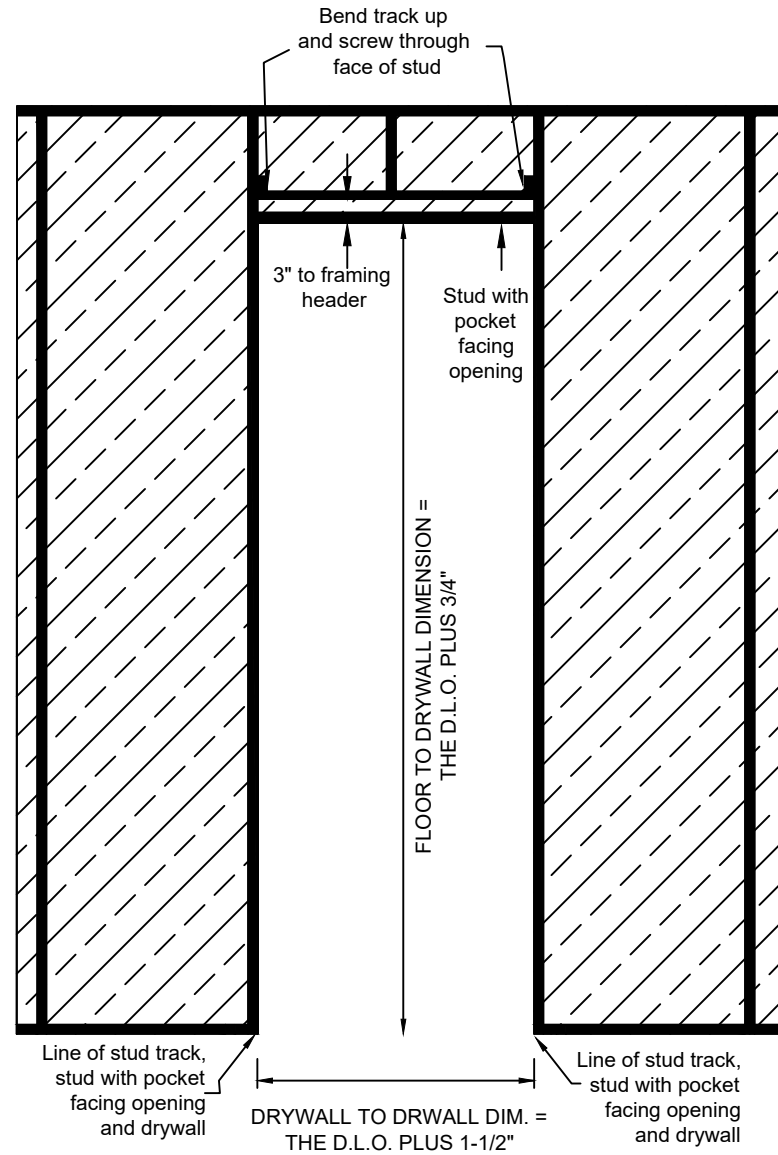
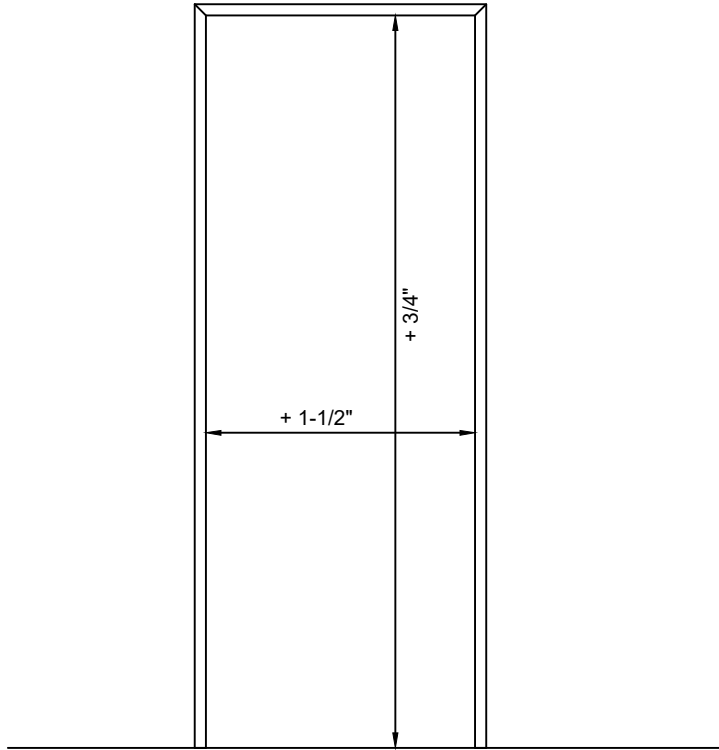
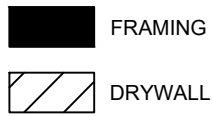
7601 Ambassador Row, Suite 102  
 Dallas, TX 75247  
 214.295.2165  
 214.496.0156 Fax

110 Viaduct Road  
 Stamford, CT 06907  
 203.316.8033  
 203.316.0019 Fax

**Snap-on Trim - Door frame with transom and sidelite**

[www.wilsonpart.com](http://www.wilsonpart.com)

# Drywall Framing Instructions



**WilsonPartitions®**

2301 E. Vernon Ave.  
 Vernon, CA 90058  
 866.443.7258  
 323.908.5430  
 323.908.5451 Fax

7601 Ambassador Row, Suite 102  
 Dallas, TX 75247  
 214.295.2165  
 214.496.0156 Fax

110 Viaduct Road  
 Stamford, CT 06907  
 203.316.8033  
 203.316.0019 Fax

**Snap-on Trim - Cased opening**

[www.wilsonpart.com](http://www.wilsonpart.com)