



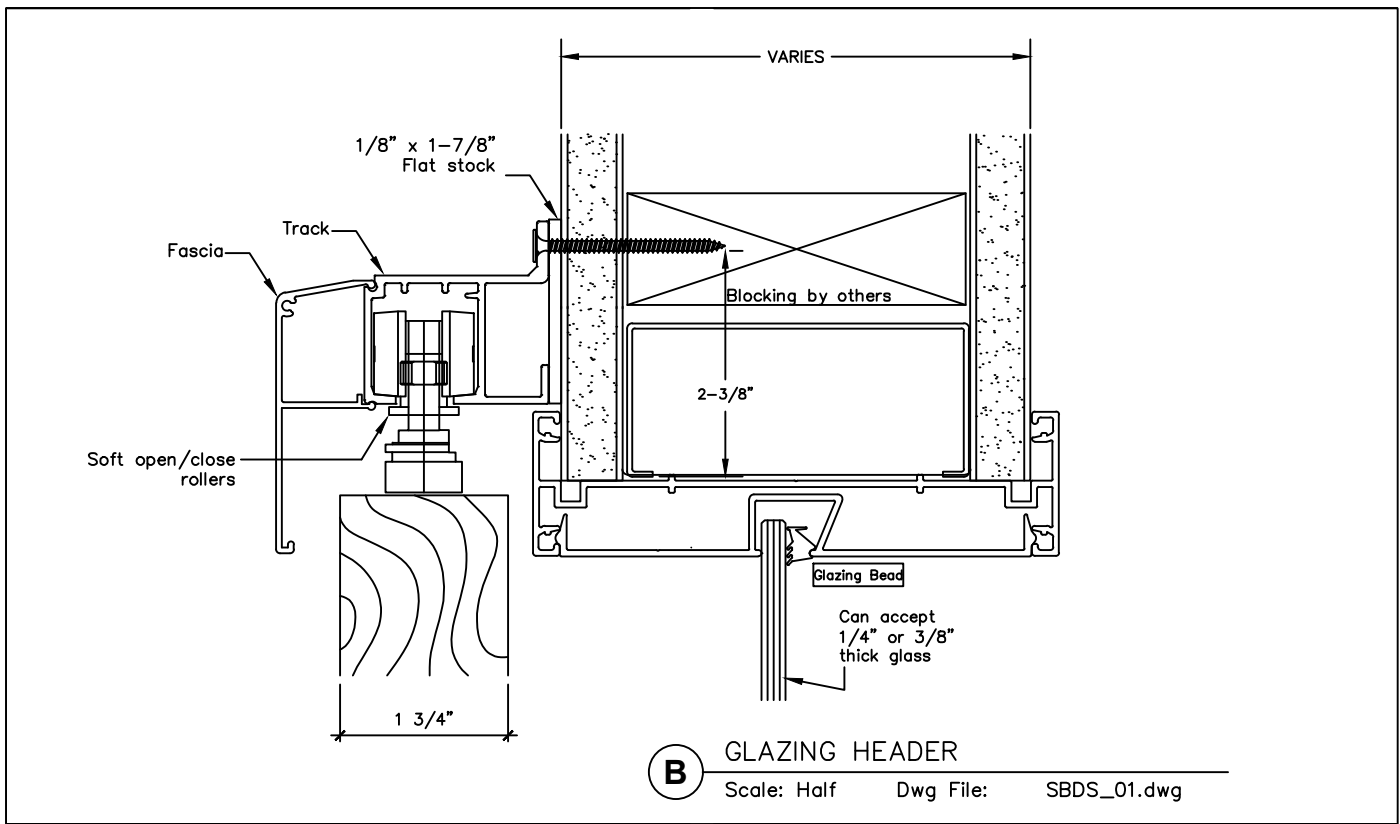
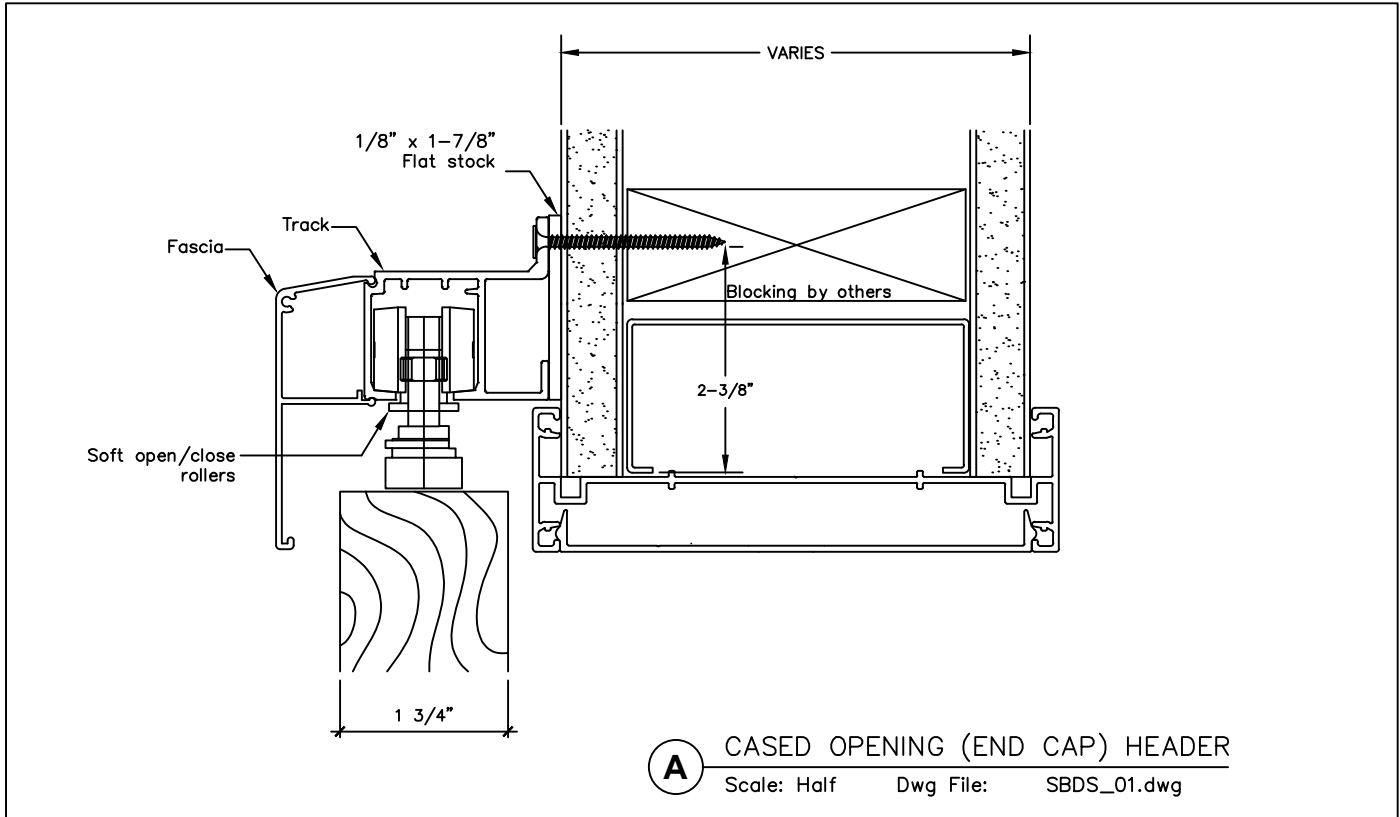
2301 E. Vernon Ave.  
Vernon, CA 90058  
866.443.7258  
323.908.5430  
323.908.5451 Fax

7601 Ambassador Row  
Suite 102  
Dallas, TX 75247  
214.295.2165  
214.496.0156 Fax

110 Viaduct Rd  
Stamford, CT 06907  
203.316.8033  
203.316.0019 Fax

www.wilsonpart.com

## BARN DOOR SLIDER FOR PROJECTED PROFILE



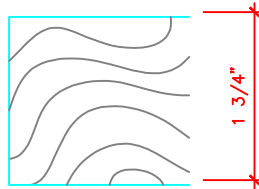
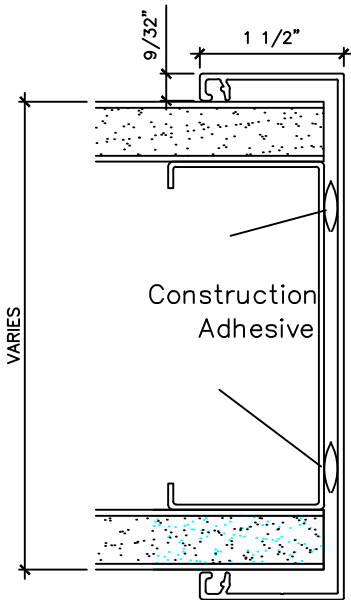
2301 E. Vernon Ave.  
Vernon, CA 90058  
866.443.7258  
323.908.5430  
323.908.5451 Fax

7601 Ambassador Row  
Suite 102  
Dallas, TX 75247  
214.295.2165  
214.496.0156 Fax

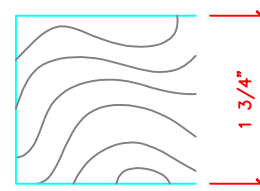
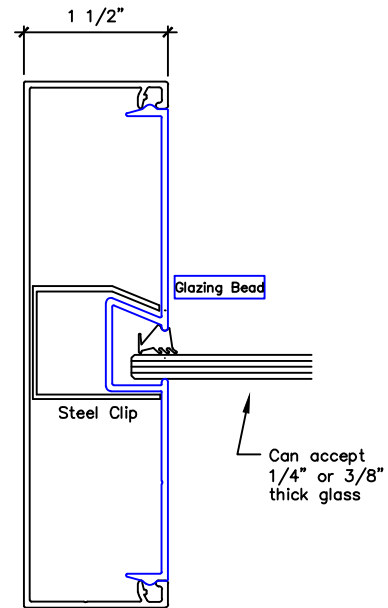
110 Viaduct Rd  
Stamford, CT 06907  
203.316.8033  
203.316.0019 Fax

[www.wilsonpart.com](http://www.wilsonpart.com)

## BARN DOOR SLIDER FOR PROJECTED PROFILE



**C** CASED OPENING JAMB  
Scale: Half Dwg File: SBDS\_02.dwg



**D** CASED OPENING JAMB  
WITH SIDELITE  
Scale: Half Dwg File: SBDS\_02.dwg

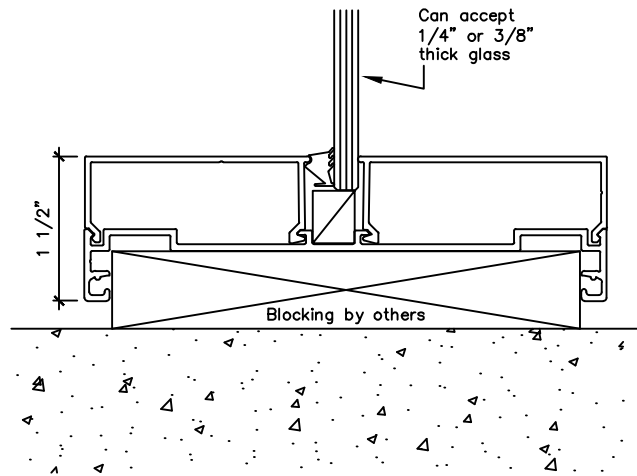
2301 E. Vernon Ave.  
Vernon, CA 90058  
866.443.7258  
323.908.5430  
323.908.5451 Fax

7601 Ambassador Row  
Suite 102  
Dallas, TX 75247  
214.295.2165  
214.496.0156 Fax

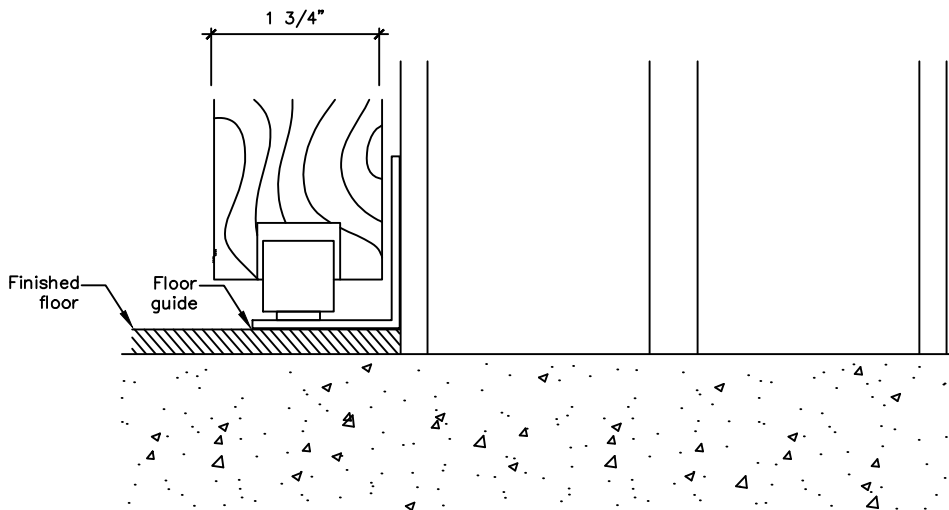
110 Viaduct Rd  
Stamford, CT 06907  
203.316.8033  
203.316.0019 Fax

www.wilsonpart.com

## BARN DOOR SLIDER FOR PROJECTED PROFILE



**E** SILL (FULL HEIGHT)  
Scale: Half    Dwg File: SBDS\_03.dwg



FLOOR GUIDE AT CASED  
OPENING JAMB WITH SIDELITE  
**E1** Scale: Half    Dwg File: SBDS\_03.dwg

## BARN DOOR SLIDER FOR PROJECTED PROFILE

