

FINISH _____

CORNER CONDITION

— SQUARE CUT

SERIES

TRIM

— 375 (3-3/4" WALL)

— 100 (1" x 3/8" Trim)

— 500 (4 7/8" WALL)

— 103-1 (1 1/2" x 5/16" Trim)

— OTHER _____

— 103-2 (2" x 5/16" Trim)

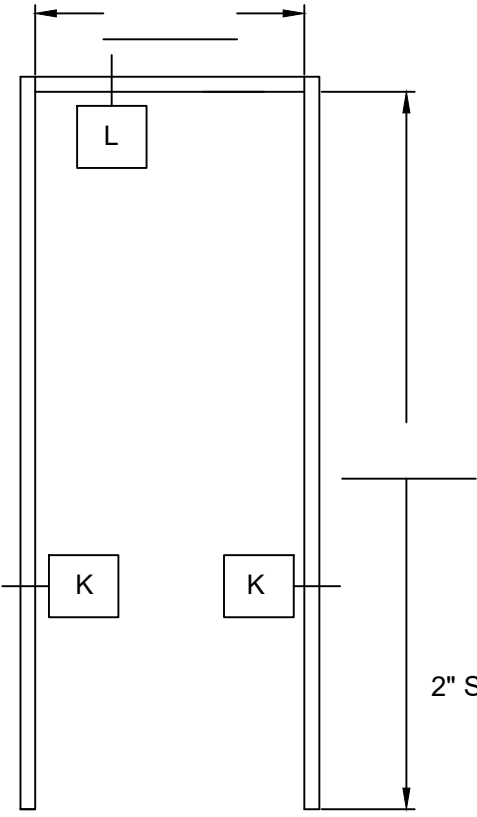
— OTHER _____

CASED OPENING

QTY. _____

MARK# _____

SPECIAL INSTRUCTIONS



2" SCRIBE
 — YES
 — NO



WilsonPartitions®

2301 E. Vernon Avenue
Vernon, CA 90058
866.443.7258
323.908.5451 Fax

7601 Ambassador Row, Suite 102
Dallas, TX 75247
214.295.2165
214.496.0156 Fax

110 Viaduct Road
Stamford, CT 06907
203.316.8033
203.316.0019 Fax

PROJECT:
CUSTOMER:
P.O. #

DATE:
REVISED:

ELEVATION: