

FINISH \_\_\_\_\_

- SERIES
- 375 (3-3/4" WALL)
  - 500 (4 7/8" WALL)
  - OTHER \_\_\_\_\_

- TRIM
- 100 (1" x 3/8" Trim)
  - 103-1 (1-1/2" x 5/16" Trim)
  - 103-2 (2" x 5/16" Trim)
  - OTHER \_\_\_\_\_

CORNER CONDITION

— MITERED

GLASS THICKNESS

- 1/4"
- 3/8"
- 1/2"

GLAZING VINYL

- GRAY
- BLACK

**BORROWED LITE**

QTY. \_\_\_\_\_

MARK# \_\_\_\_\_

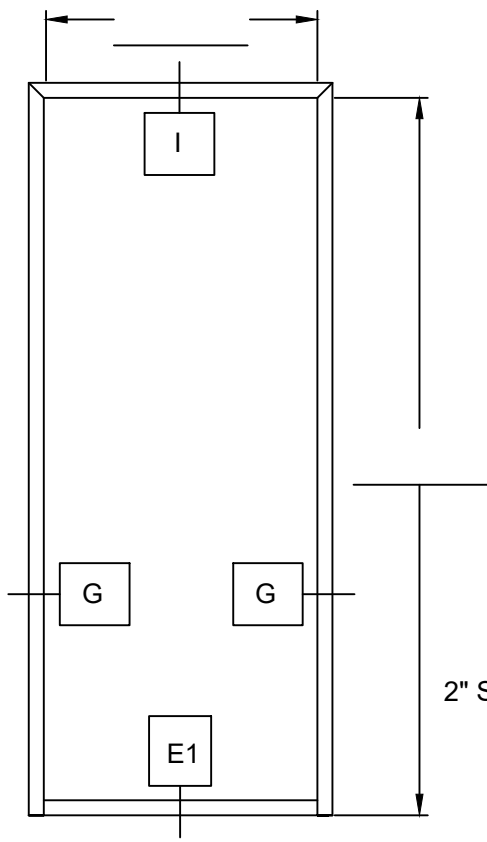
\_\_\_\_\_

SPECIAL INSTRUCTIONS

\_\_\_\_\_

\_\_\_\_\_

\_\_\_\_\_



2" SCRIBE

- YES
- NO

**WilsonPartitions®**

2301 E. Vernon Avenue Vernon, CA 90058 866.443.7258 323.908.5451 Fax	7601 Ambassador Row, Suite 102 Dallas, TX 75247 214.295.2165 214.496.0156 Fax	110 Viaduct Road Stamford, CT 06907 203.316.8033 203.316.0019 Fax
---	--	--

PROJECT: \_\_\_\_\_

CUSTOMER: \_\_\_\_\_

P.O. # \_\_\_\_\_

DATE: \_\_\_\_\_

REVISED: \_\_\_\_\_

ELEVATION: \_\_\_\_\_